



**WORLD PREMIERE**

# **DANGEROUS INSTRUMENTS**

**PALM BEACH**  
**pbd** **25**  
**DRAMAWORKS** **YEARS**

*by* **Gina Montet**

**Don & Ann Brown Theatre**

*Theatre To Think About*

# THE BEST PERFORMANCES AREN'T ALWAYS FINANCIAL



Northern Trust is proud to support  
Palm Beach Dramaworks.

See all the ways we can support *you*.



**Lisa Koza**  
Senior Managing Director  
561-802-2000  
[northerntrust.com/palm-beach](https://northerntrust.com/palm-beach)



**NORTHERN  
TRUST**

INVESTING | BANKING | TRUST & ESTATE SERVICES | WEALTH PLANNING | FAMILY OFFICE

Member FDIC. © 2025 Northern Trust Corporation.



## CHEF DRIVEN CLASSIC FOOD YOU LOVE.

*City Oyster*  
& SUSHI BAR

ATLANTIC AVE • DELRAY BEACH

**CITY CELLAR**  
WINE BAR & GRILL  
CITYPLACE • WPB

**ELISABETTA'S**  
RISTORANTE • BAR • PIZZERIA  
WPB • DELRAY BEACH

*Bar* **CAPRI**  
PIZZA • CICHETTI  
WEST PALM BEACH

**GREASE**  
BURGERS • BEER • WHISKY BAR  
CLEMATIS ST • WPB

*Big City*  
TAVERN  
LAS OLAS BLVD • FT LAUDERDALE

**LOUIE BOSSI'S**  
RISTORANTE • BAR • PIZZERIA  
BOCA RATON • FT LAUDERDALE

**BARRIO**  
PUB • BISTRO  
CITYPLACE • WPB

*Rocco's Tacos*  
AND TEQUILA BAR  
WPB • BOCA • PB GARDENS  
FT. LAUDERDALE • ORLANDO  
DELRAY BEACH • TAMPA • NAPLES  
SARASOTA

**BIGTIMERESTAURANTS.COM**

# NOTE FROM THE MANAGING DIRECTOR



I've told this story before but it bears repeating: In 2000, when Bill said he planned to start a new theatre and asked me to be part of it, I told him he was crazy. I didn't mean he was crazy for inviting me to be part of this endeavor. I thought he was crazy to undertake the project at all.

But I soon decided I could be of use in this adventure, so I came on board. And it turns out that Bill was onto something. Twenty-five years later I can honestly say that founding and building Palm Beach Dramaworks with him has been the joy and honor of my life.

As we looked ahead to our silver jubilee season, I felt that a milestone such as this was a time for reflection, for determining what I wanted to do and where I wanted to be in the coming years. And I decided that the time was right for me to relinquish the position of managing director, effective September 1.

Stepping down from that role does not mean I'm stepping away from PBD. I plan to stay on in a different capacity. But being the managing director of a theatre, like being producing artistic director, is a 24/7 job. It's both exhilarating and exhausting, and although I love what I do, I've reached a point in my life where I need fewer day-to-day responsibilities so that I can decompress and have the flexibility to spend more time with my children and grandchildren.

So, here's what I will be doing at PBD. My goal is to help secure the company's next 25 years, and that includes starting an endowment. I will continue to deepen relationships with our donors and partners – the backbone of our success – and bring new people into the PBD family. It's particularly important now, as nonprofits can no longer count on government grants to finance any programs. As you know, the 2024-25 season was the first time funding for the arts was eliminated from the state budget. You may not know that, as I write this, there's a proposal by state legislators that would eliminate all grants from the Cultural Council as well.

But with the help of individuals and foundations, we always find ways to see to it that PBD thrives. And the company will be in excellent hands. Bill remains the producing artistic director, and succeeding me as managing director is Rudina Toro, who has been our chief financial & operating officer for two years. But she's had a long relationship with the company, dating back to our early days, first as an auditor and then as an advisor, a friend, and a patron. She knows the company from the inside out, and is committed to PBD's mission. I'm excited to see what the future holds, for the company and for me.

Enjoy the world premiere of Gina Montet's *Dangerous Instruments*!

Have a wonderful summer. I look forward to seeing you at the theatre in the fall.

*Sue Ellen Beryl*

Managing Director

# *In Memoriam*



## **Gil Maurer**

May 24, 1928 - April 6, 2025

**Gil Maurer was a champion to us in so many ways. He gave generously of his time and treasure, connecting us with his family foundation and the Hearst Foundation.**

**His passing is a great loss, not only to Palm Beach Dramaworks but to the entire community, and he will be sorely missed.**

# *A Special Thank you*

25TH ANNIVERSARY SEASON SPONSORS



**Diane and Mark Perlberg**



**THE BAR @PBD**  
THE DRAMA STARTS HERE

# Specialty Cocktail

*Come one hour prior to curtain to enjoy happy half-hour in our lobby!*

## Sparkling Summer Sangria

### **INGREDIENTS:** *(Makes one large pitcher)*

- 1 cup brandy
- ½ cup orange liqueur
- ¼ cup superfine sugar *or* ⅓ cup simple syrup
- 2 bottles favorite white wine, chilled
- Prosecco to taste

### **FRUITY ADDITIONS:**

- 1 orange, thinly sliced
- 1 pint strawberries, chopped
- 1 pint raspberries
- 1 lime, thinly sliced
- 1 lemon, thinly sliced

### **HOW TO MAKE:**

In a large pitcher, combine the brandy and orange liqueur. Pour in the sugar, stir the pitcher thoroughly to mix until the sugar dissolves. Add all the fruit at once. Add the white wine and stir. Pour over ice in a fancy glass and top with prosecco, to taste. Add mint sprigs for an elevated flare!

### **PRE-ORDER NOW FOR INTERMISSION:**

Scan this QR code with your phone to order ahead and pick up your items from the bar at intermission.





# TAKE A SEAT

When you **Take a Seat**, you're not just a spectator to the magic of theatre; you're an essential part of every performance, from the opening curtain to the final standing ovation, because your gift is helping us flourish.

You are playing a role in our history, and with a gift of \$5,000 you can name a seat in our theatre for five years and receive donor recognition over that same period of time!

Each seat comes with an engraved seat plaque bearing your name or a dedication of your choice. You also have the option to choose your seat location (subject to availability).

**Seize this opportunity and take your seat today.**

Contact Sue Ellen Beryl at (561) 514-4042 ext 102  
or email [sberyl@palmbeachdramaworks.org](mailto:sberyl@palmbeachdramaworks.org)

# MENTAL HEALTH RESOURCES IN PALM BEACH COUNTY

If you know anyone of any age who needs help with mental illness, psychological disorders, behavioral health problems, or emotional issues and don't know where to turn, this page could provide some help

## **211 Palm Beach and Treasure Coast**

Call the 2-1-1 helpline 24/7 or

Text your zip code to 898211

(561) 383-1112

(866) 882-2991

Email us [help@211pbtc.org](mailto:help@211pbtc.org)

## **NAMI Palm Beach County**

Call the NAMI HelpLine, M-F 10 am – 10 pm ET

1-800-950-NAMI (6264)

(561) 588-3477

5205 Greenwood Avenue, Suite 110

West Palm Beach, FL 33407

[namipbc.org/resources/local-resources](http://namipbc.org/resources/local-resources)



# FIVE YEAR LOOKBACK

This is our final installment of PBD memories, which takes us through the current season. Notice that four of the five powerful plays selected by Producing Artistic Director William Hayes for this list reflect political and social issues that unfortunately remain all too prevalent today. And that's why it's called Theatre To Think About.

2020



2025

## **2020-2021** *The Belle of Amherst*

Playwright: William Luce | Director: William Hayes

PBD's stage was dark for the entire 2020-21 "season of covid," when the company moved its programs online. The only fully staged show, which was filmed at PBD without an audience, was a co-production with and fundraiser for PBD and Actors' Playhouse of *The Belle of Amherst*, starring a luminous Margery Lowe in the one-woman play about Emily Dickinson. Lowe was thrilled to play the role again, this time in front of an audience, during the 2021-22 season.

## **2021-2022** *The People Downstairs* (WORLD PREMIERE)

Playwright: Michael McKeever | Director: William Hayes

*The People Downstairs* tells the story of the courageous souls who hid Anne Frank and seven others during the Holocaust. The premise of the play was the brainchild of Hayes, who wanted to respond to the rise in anti-Semitism and all hate crimes. "The play serves as an important reminder for all of us to protect those who are being unfairly persecuted in our country," he said at the time. Amy Miller Brennan played Miep Gies (pictured with Bruce Linser as Henk Gies), who would go on to find Anne's diary.

## **2022-2023** *Twelve Angry Men*

Playwright: Reginald Rose | Director: J. Barry Lewis

The strengths and flaws of the American jury system are laid bare – as are the prejudices and social attitudes of those standing in judgment – in the classic *Twelve Angry Men*. First a teleplay, then a film, and then a play, each incarnation was extremely successful. PBD's production brought together 13 company veterans (eight of whom are pictured) and was such a big hit that its run was extended. It was also the final production of the brilliant scenic designer Victor Becker.

## **2023-2024** *The Messenger* (WORLD PREMIERE)

Playwright: Jenny Connell Davis | Director: William Hayes

Hungarian Holocaust survivor Georgia Gabor was the inspiration for *The Messenger*, a world premiere play commissioned by PBD. It's a meditation on the connections between past, present, and future, as the play interweaves Gabor's story with that of a young Asian American woman facing racial discrimination in this country in 2020. Davis, PBD's resident playwright, wrote a piece that is both a *cri de coeur* – "Never forget" – and a warning. (Pictured, from left: Angela Gulner, Gracie Winchester, Margery Lowe as Georgia, and Annie Fang.)

## **2024-2025** *Camping with Henry and Tom*

Playwright: Mark St. Germain | Director: William Hayes

A work of fiction inspired by an actual 1921 camping trip taken by Henry Ford (played by John Leonard Thompson, pictured left), Thomas Edison (Rob Donohoe, center), and Warren G. Harding (Tom Wahl, right) – three men with starkly different personalities and world views – the play deals with issues and ideas that we're still dealing with today. St. Germain saw the production on opening night, and later emailed Hayes, "What a wonderful production, what a gift! . . . It's a production I will always cherish."



# A TALK WITH GINA MONTET

*In Gina Montet's Dangerous Instruments, Laura is a single mother who recognizes that her young son, Daniel, is both brilliant and troubled. She fiercely advocates for him over the years, aware and terrified that he is becoming a danger to himself and others, but her pleas for help are thwarted by educators, mental health specialists, and social workers – some of whom would like to do more, but are stymied by the system.*

*Montet, who lives in Miami with her husband, Eric Nelson, and sons Kai (21), Griffin (18), and Sawyer (15), wrote the first draft of Dangerous Instruments in 2020, and recently discussed the play's genesis and evolution. These are excerpts from that conversation.*  
Sheryl Flatow

"I felt that a lot of plays had very effectively dealt with the aftermath of violent incidents in schools. I wanted to tell the story of what happens before; what brings us to that point, and what factors led up to it? That's what I started off exploring. We're all very familiar with the aftermath, unfortunately, and as

a parent and a teacher, I wanted to bring a different perspective that includes the frustrations on both sides of the story. As a teacher, I've dealt with frustrated parents. Wanting to help and not being able to is part of being an educator. The guardrails are part of the system. That's where I was coming from: those moments when parents have to fight for their kids with people who aren't necessarily the enemy, but who, for whatever reason, aren't able to do what you need them to do.

"I've been through that. All three of my sons have experienced challenges, and all of them have been very open about the things we've faced. One son struggled with ADHD and executive function disorder, another dealt with anxiety and depression, and the third is on the autism spectrum. So, the play is very personal. Interestingly, a lot of the struggles that we've gone through as a family didn't happen until after I wrote the first draft. So, with each draft, life continued to inform the play.

"I did a lot of research, everything from educational approaches to medical approaches and diagnoses, because there's new information all the time. The play has been in the hands of teachers, school administrators, and health professionals; there were a lot of interviews, discussions, and panel groups as I developed the play. I wanted them to tell me what came through for them, and what they would do and say in certain situations. There was a lot of debate amongst them, but they were very supportive and everybody had a story to tell. Nobody was offended or felt that their profession was misrepresented, because we all understood that there are positive players and negative players in every field. And I'm not here to say anything empirical about a profession at all. It's just that sometimes the people you encounter are not the right people at the right job. Everyone understood that.

"Several of the characters blame Daniel's problems on Laura, and I deliberately put that in the script because I think it's representative of our culture in general. That's the default setting: blame the parent. I'm trying to tell the other side of the story, to say, 'What if the parent did everything she could, and it wasn't enough.' When we were getting help for our sons, we encountered a number of doctors who wouldn't take insurance or weren't taking new patients. There were waiting lists. One doctor said to us, 'We're in the middle of a pediatric depression epidemic, and there aren't beds within three counties for these kids.'

"We did *Dangerous Instruments* at the Perlberg Festival of New Plays in 2023, and a lot has changed since then. PBD always does a great job of bringing people to the table who, in addition to being talented actors, are not afraid to communicate about the work. They ask questions and offer a lot of information and challenge the piece to help it grow. The changes include new characters,

and there's more that comes out of my own personal experience.

"I really wish this play were obsolete. The sad thing is that it continues to be relevant. There's a notion that this happens to other kids in other schools, and we certainly have to stop thinking that way. I hope people start having conversations that go beyond the aftermath. Who's got their eyes on the kids? Who's equipped to help them? Are their tools available to help? What do we expect of our schools? How much is fair to expect of teachers? That's the crucial question, because they can only do so much. I want the play to feel forward-thinking, to see if there are strategies that could be put in place that might stop kids headed in a bad direction.

"That said, the play isn't just about acts of violence in schools. And it's not just about children. It looks at what it's like to love someone who's struggling - in this case, a parent facing her child's mental health and neurodivergent challenges. But the story could just as easily be about a sibling, a parent, or a spouse. It's about how far love can take us especially when the systems that are supposed to help, let us down. It speaks to the weight of trying to find support that feels just out of reach, and the quiet desperation of doing whatever it takes for the people we love.

"I've always considered myself a storyteller, not a crusader. My plays aren't about making sweeping statements. I want the audience to connect with the characters, especially the tangled emotions that come with complex relationships - like those between parents and educators. My goal is to create exciting and engaging stories where people see themselves and that resonate on a personal, not political, level. The biggest compliment I can get from someone is that they see their own story in mine."

# WHY I GIVE



**I believe in the power of drama -- tragedy and comedy -- to explain the mysteries of human nature.**

**Palm Beach Dramaworks' consistently excellent productions, dedication to new works, inspiring educational programs, and extensive community engagement efforts provide powerful tools to better understand our complex world and ourselves.**

**I support PBD because any organization that can simultaneously enlighten and entertain is invaluable to our society.**

**– Susan Schwartz**

# ***EXECUTIVE PRODUCER***

Penny Bank



# **DANGEROUS INSTRUMENTS**



BILL BONE & CHRIS LARMOYEUX HELP INJURED  
PEOPLE GET THEIR LIVES BACK TOGETHER.



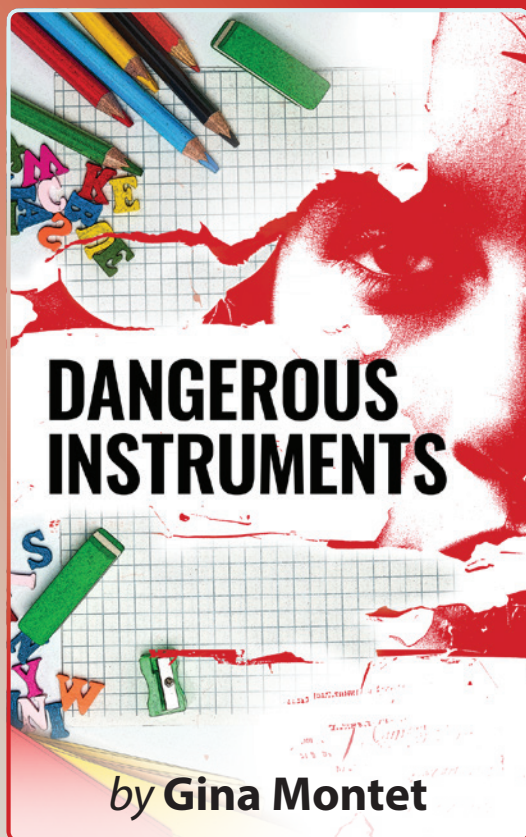
*“Promise me you’ll always remember  
— you’re braver than you believe,  
stronger than you seem,  
and smarter than you think.”*

— AA MILNE

Christopher Robin to Winnie the Pooh

✿ The law firm of Larmoyeux & Bone exclusively represents victims of automobile negligence, medical malpractice, product liability and other claims involving serious injury or death. Chris Larmoyeux and Bill Bone are specialists in civil trial law as certified by the Florida Bar. The firm is located downtown at CityPlace, 550 South Quadrille Boulevard, Suite 200, West Palm Beach, Florida 33401. Tel: {561} 832-9400 [www.LB-LAW.com](http://www.LB-LAW.com)

**Palm Beach Dramaworks**  
*presents*  
**The World Premiere of**



Originally developed by  
Palm Beach Dramaworks  
William Hayes, Producing Artistic Director  
Sue Ellen Beryl, Managing Director

This production of *Dangerous Instruments*  
is generously sponsored by  
the Cornelia T. Bailey Foundation.

William Hayes  
*Producing Artistic Director*

Sue Ellen Beryl  
*Managing Director*



*Theatre To Think About*

*Director*  
**Margaret M. Ledford\***

*Stage Manager*  
**Suzanne Clement Jones\***

*Scenic Design*  
**Samantha Pollack**  
*Sponsored by Susan Schwartz*

*Costume Design*  
**Brian O'Keefe**

*Lighting Design*  
**Dylan B. Carter**

*Sound Design*  
**Roger Arnold**

*Projection Design*  
**Adam J. Thompson†**



United Scenic Artists, Local  
USA 829 of the IATSE is the  
union representing scenic,  
costume, lighting, sound  
and projection designers in  
Live Performance.



Appearing through an  
Agreement between this  
theatre, [Producer], and Actors'  
Equity Association, the Union of  
Professional Actors and Stage  
Managers in the United States.

# DANGEROUS INSTRUMENTS

by **Gina Montet**

## CAST

(In Order of Appearance)

*Laura Hammond*.....*Savannah Faye\**

*Paul*.....*Matt Stabile\**

*Mrs. Keavers / Claire*.....*Jessica Farr\**

*Robinson / Police Officer*.....*Bruce Linser\**

*Ms. Blake / Sandy / Social Worker*.....*Maha McCain\**

## SETTING

Present day. Various classrooms and offices in South Florida.

## Production Crew

*Stage Manager*.....*Suzanne Clement Jones\**

*Assistant Stage Manager*.....*Anna-Teresa Soto-Andujar*

*Wardrobe Supervisor and Wig Designer/Hair Stylist*.....*Jane Lynch*

*Audio Engineer/Technical Assistant* .....*Keshin Martin*

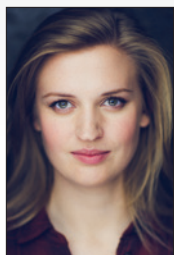
*Stage Crew Lead* .....*Julia Howe*

*Head Electrician*.....*Johanna Jackson*



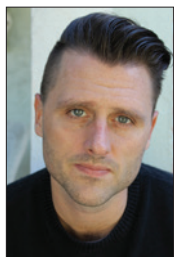
\* Appearing through an Agreement between this theatre, [Producer], and Actors' Equity Association, the Union of Professional Actors and Stage Managers in the United States.

*The videotaping or making of electronic or other audio/visual recordings of this production and distributing recordings or streams in any medium, including the internet, is strictly prohibited, a violation of the authors'(s) rights and actionable under United States copyright law. For more information visit <https://www.concordtheatricals.com/resources/protectingartists>.*

**SAVANNAH FAYE**

**(Laura Hammond)** is absolutely thrilled to be making both her PBD and professional debuts after completing her MFA at The Old Globe and University of San

Diego Shiley Graduate Theatre Program. She is an actor, playwright, and theatre maker originally from Texas, and excited to be newly based in West Palm Beach. Favorite roles include the Dauphin in *Henry V* (Globe for All Tour), Hotspur in *Henry IV, Pt I*, Gladys in *The Skin of Our Teeth*, and Starveling in *A Midsummer Night's Dream* (The Old Globe). Savannah received her BFA from Abilene Christian University. She would like to thank this wonderful cast and crew for their generosity and kindness in this process. Special thanks to the BAM fam! Much love to Pat. @savvyochran



**MATT STABLE (Paul)** is honored to be making his PBD debut. A South Florida native, he is a writer, director, actor, and educator who found his home in the theatre at an early age. He

proudly serves as the producing artistic director of Theatre Lab, the professional resident company of Florida Atlantic University, where, over the past 10 seasons, he has directed multiple world, US, and regional premiere productions and nearly 100 developmental readings of new plays. Although he rarely appears onstage these days, some past favorites include *To Fall in Love* (Wyatt), *This*

*Random World* (Gary), *Stripped* (Zach), *Detroit* (Kennedy), *Paradise Motel* (Dennis/Larry), *The Timekeepers* (Capo), and *A Midsummer Night's Dream* (Bottom/Demetrius). A proud member of AEA, Matt has performed on stages across South Florida, written and produced material for the stage and screen, and is a passionate advocate for arts and education. A special thank you to Niki Fridh for being his scene partner in the role of a lifetime

**JESSICA FARR (Chris**

**Keavers/Claire)** is a writer, director, and actor from Miami. She is an alumnus of New World School of the Arts, Fordham University, and Moscow Art Theatre

(MXAT). She has developed original programming for film, television, stage, and radio, including Comedy Central's South Beach Comedy Festival. She is a recent MIA Artist grantee, a participant in both the Miami Film Lab Development Series and the Playwriting Development Program, and a TCG Artist grantee. Jessica has worked in various roles for numerous theatres including Miami New Drama, City Theatre, Signature Theatre, Theatre Lab, MTC, Juggerknot Theatre Company, GableStage, PBD, Actors' Playhouse, and Mad Cat Theatre Company. Her film *A Florida Story* has won accolades in several festivals including the Independent Shorts Awards. Another film, *The Flock*, is currently in pre-production. jessicafarr.com @jotalejos

**BRUCE LINSER****(Dr. Pat Robinson/  
Officer)**PBD credits include Evan Reynolds/Judge Howard in *The Cancellation of Lauren Fein*, Bill in *August: Osage County*, Juror 12

in *Twelve Angry Men*, Henk in the world premiere of *The People Downstairs*, and Artie in *The House of Blue Leaves*. Other favorite roles include John/James in *Love! Valour! Compassion!* (Island City Stage), Bob Cratchit/Ghost of Christmas Past in *A Christmas Carol* and Cliff in *Cabaret* (Maltz Jupiter Theatre), Gavin in the world premiere of *Family Tree* (Plays of Wilton), Man in Chair in *The Drowsy Chaperone* (The Wick Theatre), and numerous roles at FAU's Festival Repertory Theatre including Che in *Evita*, Bobby in *Company*, and Malvolio in *Twelfth Night*. As a director, favorite productions include *The Science of Leaving Omaha*, *The Spitfire Grill*, and *Woody Guthrie's American Song* (PBD); *Man of La Mancha* and *Avenue Q* (MNM Theatre Company); and *108 Waverly* and *The Timekeepers* (Plays of Wilton). [brucelinsers.com](http://brucelinsers.com)

**MAHA MCCAIN (Ms.****Blake/Sandy/Social****Worker)** is making her PBD debut. An assistant professor and director with the University of Miami's Department of Theatre Arts, Maha

regularly presents academic research on performance and recently was commissioned to curate study units and articles for Digital Theatre+. Professional acting credits include Off-Broadway, Cincinnati Playhouse in the Park, FAU's

Theatre Lab, Arca Images (with Pulitzer Prize-winning playwright Nilo Cruz), Actors' Playhouse, Redhouse Arts Center, Mad Cat Theatre Company, Just the Funny Improv, and more. Professional directing credits include Redhouse Arts Center, Royal Caribbean Cruise Lines, City Theatre Miami, New City Players, and Coconut Grove Theatre Festival. She was the artistic director for UM's Summer Theatre Academy for over a decade. Maha has an MFA in acting from Ohio University. A Carbonell nominated actor, she is a member of Actors' Equity Association and an associate member of the Stage Directors and Choreographers Society.

**GINA MONTET****(Playwright)** ishonored to return to PBD with *Dangerous Instruments*, which was first seen as a reading in the 2023 Perlberg Festival of

New Plays. That marked her second festival appearance, following the 2020 reading of her original drama *The Prey*. A graduate of the University of Miami, Gina has been active in South Florida theatre for over 20 years. Among her many successful works are environmental education and literacy plays for young audiences, which have toured Florida since 2000 and continue to entertain and educate tens of thousands of students annually. Gina's work has been developed by several organizations including Theatre Lab at FAU, City Theatre, Fantasy Theatre Factory at the Sandrell Rivers Theater, The Playwrights' Center in Minneapolis, Mangrove Creative Collective, The Greenhouse at Florida International University, the Miami-Dade County Department of

Cultural Affairs' Playwright Development Program, and the Center for Performing Arts in Minneapolis. An experienced educator, Gina shares her talents with several schools and theatres in Miami, where she teaches theatre arts and film production.



**MARGARET M. LEDFORD (Director)** has been artistic director of Miami's City Theatre since 2017. Originally from Chattanooga, she received her BA in theatre and speech

from the University of Tennessee. After cutting her professional teeth as an Equity stage manager at Virginia's historic Barter Theatre, Margaret made the leap to directing. She has directed plays, musicals, and readings all over South Florida, including Promethean Theatre (resident director/associate artistic director for eight years), PBD, GableStage, Florida Repertory Theatre, Naked Stage, New Theatre, Delray Beach Arts Garage, Mangrove Creative Collective (co-founder and creator), Mosaic Theatre, Caldwell Theatre Company, Actors' Playhouse, Florida Stage, Island City Stage, Thinking Cap Theatre, Theatre Lab, FIU, FAU, Nova Southeastern University, and Miami Dade County Playwright Development Program. Margaret is a reviewer for the national foundation YoungArts, a member of Actors' Equity Association, and a member of FIU's Theatre Industry Advisory Board. She is an eight-time Carbonell Award nominee for Best Director, a Carbonell winner for Lighting Design, and winner of multiple Silver Palm and Broadway World awards for Direction.



**SUZANNE CLEMENT JONES (Stage Manager)** was named PBD resident stage manager for the 2024-25 season. She has been stage managing at PBD since *All My Sons* in

2011, the company's first production at the Don & Ann Brown Theatre. Recent shows for PBD include *Camping with Henry and Tom*, *The Humans*, *The Dresser*, *Lost in Yonkers*, *Trying*, *Lobby Hero*, *Topdog/ Underdog*, *4000 Miles*, *The Belle of Amherst*, *Intimate Apparel*, *The People Downstairs*, and *Ordinary Americans*. At Maltz Jupiter Theatre: *A Christmas Carol*, *Beautiful: The Carole King Musical*, *42<sup>nd</sup> Street*, *Oliver!*, *Sweet Charity*, *A Funny Thing Happened on the Way to the Forum*, and *I Hate Hamlet*. As a lighting designer, productions include *The Subject was Roses*, *The Price*, and *That Championship Season* at PBD; *Cane* and *The Cha-Cha of a Camel Spider* at Florida Stage; *Death and the Maiden* and *The Birds* at Mosaic Theatre; and *Ring of Fire* at Arts Garage. She earned a Carbonell Award for her lighting design of *Dark Rapture* in 1995. Suzanne has an MFA in design from Northwestern University, is proud to be a member of Actors' Equity Association, and is presently leading the South Florida Equity community.

**SAMANTHA POLLACK (Scenic Design, sponsored by Susan Schwartz)** is a multidisciplinary artist, designer, and maker. Born in South Florida, she is now based in Pittsburgh. She is excited by world-building and narrative art, especially when working collaboratively to create unique and memorable shared experiences. Having previously designed in Pittsburgh, she feels fortunate to

make her Florida design debut minutes from Alexander W. Dreyfoos School of the Arts, where she graduated in 2011. She holds a BFA and MFA from Carnegie Mellon University. Samantha would like to thank her family and educators for their support, especially Edward Blanchette, who did not get to see this dream achieved, but always believed it would be. [didiyoumakethatsam.com](http://didiyoumakethatsam.com)

**BRIAN O'KEEFE (Costume Design)** began designing for PBD in 2009, became costume shop manager and resident designer in 2015, and has designed over 65 shows here. He has received 11 Carbonell Award nominations, winning for *Les Liaisons Dangereuses*, *The Lion in Winter*, and *A Doll's House*, and was a Silver Palm Award recipient in 2022. A graduate of UNC-Chapel Hill, he spent his earlier career as a patternmaker for the Shakespeare Theatre in Washington, DC and major costume houses in New York, including Barbara Matera, Ltd., Parsons-Meares, Michael-Jon Costumes, and Eaves-Brooks. He was later resident designer, principal patternmaker, and shop manager for Seaside Music Theatre in Daytona Beach, spending 16 years designing over 75 productions and supervising 90 more. Other regional design credits: Playmakers Repertory Theatre, Orlando Repertory Theatre, Winter Park Playhouse, St. Augustine's Limelight Theatre, University of Central Florida. Other regional patterning credits: Alabama and Utah Shakespeare festivals, and Stages St. Louis.

**DYLAN B. CARTER (Lighting Design)** is both a theatre and concert lighting designer. He designed over 40 concerts and festivals of symphonies, jazz

ensembles, and contemporary bands for the Frost School of Music between 2021 and 2022. His Florida theatre credits include *Birthright* (assistant, Miami New Drama), *Timekeepers* (assistant, Plays of Wilton), *Bad Dog* (associate, Miami New Drama), *The Theory of Relativity* (PBD), *LabRATS* (Theatre Lab at FAU), and *The Importance of Being Earnest* (assistant, Ring Theatre). He also designed a summer season of shows in 2023, consisting of *Grease*, *The 39 Steps*, *The Sound of Music*, and *9 to 5: The Musical*. Additionally, Dylan designed PBD's Perlberg Festival of New Plays and both the 10-Minute and 1-Minute Young Playwrights Play Contests in 2024. He holds a BS in electrical engineering from the University of Miami. [dylanbcarter.com](http://dylanbcarter.com)

**ROGER ARNOLD (Sound Design)** is PBD's production manager. He has been a freelance sound engineer and designer for over 35 years. He is a voting member of both NARAS (the Grammys) and the Audio Engineering Society (AES.org). Roger became an educator of music technology in 2006 and was the senior music technology professor at the University of New Haven. During his tenure there, he designed and provided sound for *The Rocky Horror Show*, *How to Succeed in Business Without Really Trying*, and *Spring Awakening*. In 2018, he relocated to South Florida, and in 2019 he became sound engineer and resident sound designer for PBD, where his credits include *Camping with Henry and Tom*, *The Humans*, *The Dresser*, *Lost in Yonkers*, *Trying*, *Death of a Salesman*, *The Cancellation of Lauren Fein*, *The Messenger*, *Lobby Hero*, *Topdog/Underdog*, *August: Osage County*, *The Science of Leaving Omaha*, *Twelve Angry Men*, *4000 Miles*, *The Belle of Amherst*,

*Intimate Apparel, The Duration, Almost, Maine, The People Downstairs, and Skylight.* Other sound design credits include Empire Stage's production of *Tru* and *The Timekeepers* at Plays of Wilton. BA in music and sound recording, University of New Haven. MA in music technology, University of Newcastle.

**ADAM J. THOMPSON (Video Design)** was named resident projection designer at PBD in January 2024. He is the recipient of the 2023 USITT and Live Design Rising Star Award, recognizing early career excellence, innovation, and artistic achievement in the field of design. Adam represented the United States at the 2018 Beijing International Design Biennial and he founded and led The Deconstructive Theatre Project from 2006-2016. At PBD, he has previously designed video and projections for *The Messenger, The Cancellation of Lauren Fein, Death of a Salesman*, the 25th Anniversary Gala, *Camping with Henry & Tom*, and all of the theatre's new multimedia lobby displays. Adam's work Off-Broadway and across the US has been recognized with awards from the National Endowment for the Arts, the NYC Department of Cultural Affairs, the Jerome Robbins Foundation, and the Robert Rauschenberg Foundation. He holds a BA in directing and dramaturgy from Emerson College and an MFA in video and media design from Carnegie Mellon University.  
adamjacobthompson.com

**ANNA-TERESSA SOTO-ANDUJAR (Assistant Stage Manager)** recently graduated cum laude from Florida Atlantic University, with a BA in theatre and a double minor in photography and cinematography. During her time at FAU, she studied costumes, stage management, props, puppetry, and stage combat, and became a certified Actor Combatant. In 2019, she earned certifications from the summer school program at the Royal Academy of Dramatic Arts. She is very proud to have joined the PBD staff as assistant stage manager; her first show was *Lost in Yonkers*, followed by *The Dresser, The Humans*, and *Camping with Henry and Tom*. Other credits include working for the Broadway company Aurora Productions as wardrobe supervisor on *The Tempest* at the Colonial Theatre in Westerly, Rhode Island; stage manager for Prague Shakespeare Company's student show in Czech Republic; and stage manager for Theatre Lab's 2023 New Play Festival. Anna-Teresa is deeply grateful to her family, friends, and mentors who have assisted her every step of the way.

**Actors' Equity Association (AEA)** was founded in 1913 as the first of the American actor unions. Equity's mission is to advance, promote and foster the art of live theatre as an essential component of our society. Today, Equity represents more than 40,000 actors, singers, dancers and stage managers working in hundreds of theatres across the United States. Equity members are dedicated to working in the theatre as a profession, upholding the highest artistic standards.

Equity negotiates wages and working conditions and provides a wide range of benefits including health and pension plans for its members. Through its agreement with Equity, this theatre has committed to the fair treatment of the actors and state managers employed in this production.

AEA is a member of the AFL-CIO and is affiliated with FIA, an international organization of performing arts unions. For more information, visit [www.actorsequity.org](http://www.actorsequity.org).



# PALM BEACH DRAMAWORKS STAFF

## Executive

Producing Artistic Director  
Managing Director  
Chief Financial & Operating Officer

William Hayes  
Sue Ellen Beryl  
Rudina Toro

## Administrative

Business & HR Director  
Director of Education & Community Engagement  
Marketing Coordinator  
Company Manager  
Box Office & Concessions Manager  
House Manager  
Development Associate  
Operations Associate  
Assistant Box Office Manager  
Box Office Associates

Lara Garcia  
Gary Cadwallader  
Alessandra Lasanta  
James Cichewicz  
Mark Sullivan  
Mindy Martin  
Megan Gurtner  
Erica Negron  
Cody Thurber  
Desmond Lewis  
Alexa Rosenberger

## Production

Production Manager/Resident Sound Designer  
Technical Director  
Assistant Technical Director/Lead Carpenter  
Head of Properties/Shop Assistant  
Audio Engineer/Technical Assistant  
Costume Shop Manager/Resident Costume Designer  
Wardrobe Supervisor and Wig Designer/Hair Stylist  
Stage Crew Lead  
Assistant Stage Manager  
Head Electrician

Roger Arnold  
Doug Wilkinson  
Kira Barnes  
Jillian Feigenblat  
Keshin Martin  
Brian O'Keefe  
Jane Lynch  
Julia Howe  
Anna-Teresa Soto-Andujar  
Johanna Jackson

## Artists in Residence

Resident Director  
Resident Playwright/Literary Manager  
Resident Scenic Designer  
Resident Lighting Designer  
Resident Projection Designer  
Resident Scenic Artist  
Resident Stage Manager

J. Barry Lewis  
Jenny Connell Davis  
Anne Mundell  
Kirk Bookman  
Adam J. Thompson  
Rebecca Pancoast  
Suzanne Clement Jones

## Associates

Writer/Editor  
Marketing Consultant  
Poster Artwork  
Graphic Designers

Sheryl Flatow  
Jennifer Sardone-Shiner  
Paul Gaschler  
Jackie D'Onofrio  
Jarrod Hogg

PALM BEACH  
**pbd**  
DRAMAWORKS



**CELEBRATING 25 YEARS  
OF PROFESSIONAL  
THEATRE EXCELLENCE!**



JOIN THE

## SUSTAINER SOCIETY



Become a member with a minimum pledge of \$5,000 over five years. For \$1,000 a year, you'll be recognized as a \$5,000 donor in our playbill and on our website for the next five years. For a pledge of \$10,000 or greater over five years, you'll receive additional acknowledgment in our lobby

**\$75,000**

---

**Joanna and Ben Boynton**

**\$50,000**

---

**Bitasta (Vitti) Chaturvedi and Family**

**Cathy and Tom Farmer**

**Leah and Ed Frankel Foundation**

**Pamela and Robert Goergen**

**\$25,000**

---

**Penny Bank**

**Peter Wronsky**

**Susan and Joe Biernat**

**Rebecca and Randell Doane**

**Monica and Scott Laurans**

**Diann and Tom Mann**

**Sandra and Bernie Meyer**

**Stephanie and John Pew**

**Annalee Shein**

**Wayne Shepard**

**Dan Sherbo and Tom Nixon**

**Stanley Waldshan, in Honor of Carole Waldshan**

**Diana and John Weir**

**Ronald Wetzol and Nathan Hensch**

## **\$15,000**

---

Karen and Alfred Blum  
Ann and Bob Hagelstein  
Gayle Brody Jacobs

Robin and Reuben Jeffery  
Elaine and Larry Rothenberg

## **\$10,000**

---

Gail and Paul Altieri  
Louise Austin  
Penny and Mitchell Beers  
Paul Bernabeo and David Cohen  
Atesh Chandra  
Laura Cole  
Bharati and Rohit Dandiya  
Margaret Donnelley  
Mary Jo and Vince Elhilow  
Arlene and Glenn Englander  
Jeanne and David Goldner  
Zee Jay and Jerry Greenspan  
Rochelle and David Hirsch  
Michael Hoagland and Joseph Kolb  
Rand Hoch  
Emma Horn

Judy Lewent and Mark Shapiro  
Zelda Mason  
Thomas Moran  
Elinor and Harold Oertell  
Martha and Ward Parker  
Katherine Pizzella and Barbara Pizzella  
Linda and Jay Rosenkranz  
Shari Santell  
Madeline and Arnold Schuster  
Lainey and Beryl Simonson  
Susan Schwartz  
Arlene and Richard Siudek  
Louise and Barry Snyder  
Susan and Benjamin Winter  
Nancy Yanofsky and Ed Brown  
Susan Winter Zacherman

## **\$5,000**

---

Deborha Campbell  
Phyllis Cohen  
Michael Collins and Jim Harshbarger  
Loretta and Bob Comfort  
Lucy W. Cook  
Ann Cope  
Karol and Paul Costa  
Lynne and Perry Feyk  
Melanie and Mort Fishman  
Esther Flaster  
Susan Metzler-Kirkman  
Linda and Ray Golden  
Susan and Stuart Goodman  
Judith Kotick Hans  
Suzanne Holmes

Mary Jacobson  
Ellen Levy  
Terry and David Liddell  
Emily and Naj Pervez  
Robyn and Dale Rands  
Peter Rezzonico  
Barbara Rosenberger  
Carol and Joseph Rosetti  
Esther Schaeffer  
Sanford Schuman  
Julia and Wayne Shovelin  
Jody Sklar and Dana Fishkin  
Judith and Howard Weiner  
Adrienne Yorinks



*The Dresser, 2024*

From left: William Hayes, Denise Cormier, David A. Hyland,  
Kelly Gibson, and Colin McPhillamy  
Curtis Brown Photography

# Support our Annual Fund

Supporting our general operating fund is what keeps our mission thriving. The generosity of our patrons enables us to push boundaries with new works, engage young minds through our educational programs, and create unforgettable theatre experiences for our audience.

## ★ BECOME A PRODUCER ★

Be an integral part of producing one of our productions. Individual and Corporate Sponsorship opportunities are available for:

**\$10,000** Associate Producer

**\$15,000** Producer

**\$25,000** Executive Producer  
(exclusive opportunity)

**vipbd** PALM BEACH  
DRAMAWORKS

Please consider a donation at one of these levels:

**\$100 | \$500**

**\$1,000 | \$2,500**

**\$5,000**

To discover all the benefits of our Annual Giving Programs, contact Sue Ellen Beryl at (561) 514-4042 ext 102 or email [sberyl@palmbeachdramaworks.org](mailto:sberyl@palmbeachdramaworks.org).

# Become a PBD Donor!

*Gifts of \$100 or more will be recognized in our playbill for one year from the gift date.*

A QCD is a tax efficient way to support a charity and satisfy your annual required minimum distribution (RMD). Once you reach RMD age, the money you send from your traditional IRA to a qualified charity counts towards your RMD but isn't subject to federal income tax.

**Please return this form to the Box Office, or via mail to:**  
**Palm Beach Dramaworks**  
**201 Clematis Street**  
**West Palm Beach,**  
**Florida 33401**

**Your donation is greatly appreciated!**

Palm Beach Dramaworks is a 501(c)(3) not-for-profit corporation and gifts are tax-deductible to the extent provided by law. Federal tax ID #65-1040048. A copy of the official registration and financial information may be obtained from the Division of Consumer Services (800-435-7352 within FL). Registration does not imply endorsement by the state. Registration #CH15836.



## I / We would like to make a tax-deductible contribution to Palm Beach Dramaworks!

☐ Please contact me/us about all giving opportunities.

### VIPBD Giving Levels

☐ \$100 ☐ \$500 ☐ \$1,000 ☐ \$2,500 ☐ \$5,000

### Become A Producer!

☐ Associate Producer \$10,000

☐ Producer \$15,000

☐ Executive Producer \$25,000

### Sustainer Society

I / We would like to make a pledge of

☐ \$5,000 (\$1,000 per year for five years)

☐ \$10,000 (\$2,000 per year for five years)

☐ \$Other \_\_\_\_\_

### Please let us know if you plan to:

☐ Make a bequest through your estate

☐ Add PBD as a beneficiary for a life insurance policy

☐ I / We have already included PBD in our estate plan.

Please list my/our name as follows:

\_\_\_\_\_

Name \_\_\_\_\_ Date \_\_\_\_\_

Address \_\_\_\_\_

City / State / Zip \_\_\_\_\_

Telephone \_\_\_\_\_

Email \_\_\_\_\_

Donor Recognition Name \_\_\_\_\_

☐ Enclosed is a check for \$ \_\_\_\_\_ Check # \_\_\_\_\_  
(Payable to Palm Beach Dramaworks)

☐ Please charge my credit card:

☐ Monthly: \$ \_\_\_\_\_ ☐ One time, full amount: \$ \_\_\_\_\_

Name on Credit Card \_\_\_\_\_

Credit Card Number \_\_\_\_\_

Security Code \_\_\_\_\_ Exp. Date \_\_\_\_\_

Signature \_\_\_\_\_

CONGRATULATIONS  
ON YOUR 25TH ANNIVERSARY  
SEASON



Building Spaces Where Creativity Thrives

[BSACONSTRUCTION.COM](http://BSACONSTRUCTION.COM)

561-272-6350

CGC 022739

# CADENCE

## RETIREMENT GROUP

WELLS FARGO ADVISORS FINANCIAL NETWORK

CHEERS TO PALM BEACH DRAMAWORKS

*for 25 Years of Theatre!*

## Your Goals and Dreams, Our Guidance



**Virginia Lynn, CRPC®**  
*Managing Director*  
Cadence Retirement Group

4600 Military Trail, Unit 217  
Jupiter, FL 33458

Office: (561) 714-5646

[virginia@cadanceretirementgroup.com](mailto:virginia@cadanceretirementgroup.com)  
[www.cadanceretirementgroup.com](http://www.cadanceretirementgroup.com)



**Durley Meyer, QPFC®**  
*Senior Financial Advisor*  
Cadence Retirement Group

4600 Military Trail, Unit 217  
Jupiter, FL 33458

Direct: (561) 781-7072

[durley@cadanceretirementgroup.com](mailto:durley@cadanceretirementgroup.com)  
[www.cadanceretirementgroup.com](http://www.cadanceretirementgroup.com)



Entertaining,  
enlightening,  
stimulating  
discussion,  
and  
illuminating  
our shared  
humanity.

The Palm Beach Post  
is proud to support





# Thank You to our volunteers

*"The smallest act of kindness is worth more than the grandest intention."*  
—Oscar Wilde



To learn more about becoming a PBD volunteer usher, contact Mindy Martin at 561-514-4042 x109 or [mmartin@palmbeachdramaworks.org](mailto:mmartin@palmbeachdramaworks.org)

## *Congratulations to our 2024/25*

### **PBD AMBASSADORS!**

We're grateful to our volunteer ambassadors for their help in introducing our theatre to the surrounding community and promoting us to their family and friends.

---

Penny Bank	Tom Ermolovich	Mary Jane Range
Paul Bernabeo	Eva Hausman	Louise Snyder
Ravi Chaturvedi	Emma Horn	Elissa Terry
David Cohen	Ibby Lucas	Jack Thompson
Elaine Ermolovich	Carlton Moody	Jenifer Wilbers

---

To learn more about becoming a PBD Ambassador please contact Managing Director Sue Ellen Beryl: [sberyl@palmbeachdramaworks.org](mailto:sberyl@palmbeachdramaworks.org)

# EDUCATION

We're committed to providing strong, vibrant educational opportunities for students in order to nurture creativity, inspire artistic potential, build confidence, and cultivate self-expression.



**theAcademy@pbd:** Quality training for aspiring actors and stage managers in grades 9-12, culminating in a production on our stage. Sponsored by Mary Keymer and the Sean Boneri Creative Fellowship.

**One Humanity Tour:** A middle school touring program that uses storytelling with serious social themes to develop informed, thoughtful, and compassionate citizens.

**Young Playwrights 10-Minute & 1-Minute Play Contests:** A program that gives teens a creative voice in expressing their thoughts and ideas.

**Free Student Matinees:** School-day performances to PBD's productions. Sponsored by Susan and Joseph Biernat.

**The 'Lit' Theatre Project:** An essay contest centered on a PBD production. Sponsored in part by Kids' Dreams and the Virginia & Harvey Kimmel Family Fund.



**The Legacy Project:** In partnership with Compass Community Center, PBD works directly with Compass Youth on an annual LGBTQ+ intergenerational digital storytelling project. Sponsored by Macy's.



For more information contact Gary Cadwallader: [gcadwallader@palmbeachdramaworks.org](mailto:gcadwallader@palmbeachdramaworks.org)

# SUPPORT OF OUR EDUCATION AND COMMUNITY ENGAGEMENT PROGRAMS

1-Minute Playwriting Contest

10-Minute Playwriting Contest

Field trips

One Humanity Tour

theAcademy@pbd

‘Lit’ Theatre Project

Dramawise

The Legacy Project

Outstage@pbd

## THANK YOU TO OUR GENEROUS SPONSORS

**\$150,000**

Hearst Foundation

**\$50,000**

Cultural Council of PBC

**\$25,000**

Penny Bank

Susan and Joe Biernat

Paul Bernabeo and David Cohen

Sandra and Bernie Meyer

Laura Niklaus

**\$15,000**

Stephen Brown and Jamie Stern

Virginia and Harvey Kimmel Family Fund

**\$10,000**

Kids’ Dreams

Mary Keymer and the Sean Boneri Creative Fellowship

**\$5,000**

Anonymous

John Laughton and James Weinberg

**\$2,500**

Macys

**\$2,000**

Stephen Nesbitt and Christopher Caneles

**\$250**

Beth Baker | Karen and Al Blum

Alexis Read | Peter and Lynn Read



# Subscribe to the 2025/26 Season Today!

- ✓ Lock in a discount of over 10% on regularly priced tickets for each production.
- ✓ Choose all 5 plays, or a 4-play series: 1-4 or 2-5
- ✓ Secure the same seats for all 4 or 5 plays, with the ability to renew those seats in future seasons.
- ✓ Purchase single tickets and make exchanges one week prior to the general public.
- ✓ Pay one flat fee and additional ticket fees will be waived.
- ✓ Take advantage of flexible ticket exchanges and last-minute standby options.

## Dramawise

Sponsored by Sandra and Bernie Meyer

### 2025/26 SEASON

10/23, 12/11, 2/5, 4/2, 5/14

A multi-faceted course for adults that provides insight into each play and the creative process. Each program includes a comprehensive discussion about the play, lunch, and an intimate look at PBD's production with the director, actors, and designers.

## OutStage@pbd

### 2025/26 SEASON

10/31, 12/19, 2/13, 4/10, 5/22

Special evenings of each PBD production that engage the LGBTQ community. Evenings include a pre-show reception, the play, and a post-show reception.

**For more information and tickets to all programs, visit [palmbeachdramaworks.org](http://palmbeachdramaworks.org) or call (561) 514-4042 ext 2**

# 2025/26 SEASON SERIES SUBSCRIPTION FORM

Name \_\_\_\_\_

Email \_\_\_\_\_

Phone \_\_\_\_\_

Local Address \_\_\_\_\_

City / State / Zip \_\_\_\_\_

**PLAYS:**   ☐ **All 5 Plays**   ☐ **Plays 1-4**   ☐ **Plays 2-5**   **# Seats:** \_\_\_\_\_

**SERIES (Day/Time):** \_\_\_\_\_

**SEATING REQUEST:** \_\_\_\_\_

\_\_\_\_\_

\_\_\_\_\_

## SEASON SUBSCRIPTION PRICES

	Standard	Preview	Opening or OutStage
5 PLAYS	\$395	\$295	\$495
4 PLAYS	\$316	\$236	\$396

SEASON SUBSCRIPTION	# of Seats	Individual Price	Subscription Total
Series: _____	_____	x \$ _____	\$ _____
F02 Series ONLY:	4 Play = Add \$80 x # of seats		<b>OutStage Total</b>
<b>Please add OutStage!</b>	5 Play = Add \$100 x # of seats		\$ _____
<b>Perlberg Festival of New Plays</b>	Package = \$100 x # of seats		<b>Festival Total</b>
			\$ _____

## PAYMENT

☐ Pay by Credit Card # \_\_\_\_\_

Name on Credit Card \_\_\_\_\_

Security Code \_\_\_\_\_ Exp. Date \_\_\_\_\_

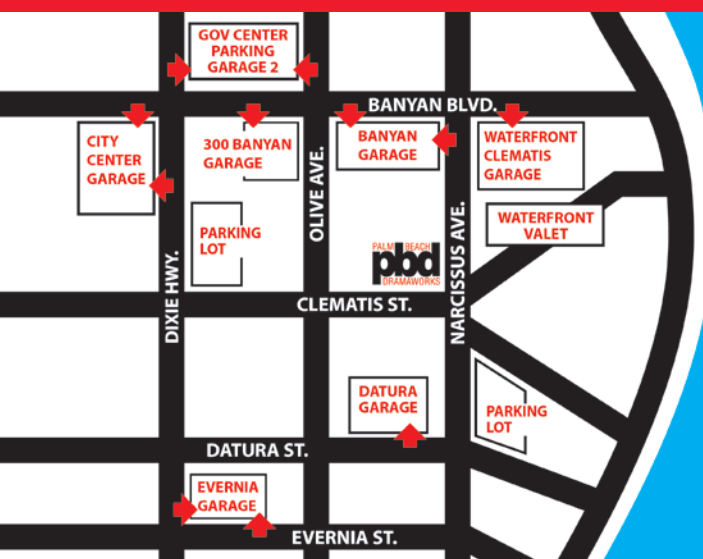
☐ Pay by Check (enclosed)      Check # \_\_\_\_\_

Signature \_\_\_\_\_

**PLEASE FILL OUT FORM AND RETURN TO BOX OFFICE**

**201 Clematis Street, West Palm Beach, Florida 33401**

# PARKING *WITHOUT THE DRAMA*



**THE BAR @PBD**  
THE DRAMA STARTS HERE

*Come one hour prior to curtain to enjoy happy half-hour in our lobby!*

## **NEW - 300 Banyan Garage:**

300 Banyan Blvd. Southwest corner of  
Banyan Blvd. and Olive Ave.

Distance: 0.1 mile. 🚶 = 3 minutes

## **Banyan Garage:**

200 Banyan Blvd. between  
Olive Ave. and Narcissus Ave.

Distance: 0.1 mile. 🚶 = 3 minutes

## **Waterfront Clematis Garage:**

101 Clematis St. Southeast corner of  
Banyan Blvd. and Narcissus Ave.

Distance: 0.1 mile. 🚶 = 3 minutes

## **Datura Garage:**

205 Datura St. between  
Narcissus Ave. and Olive Ave.

Distance: 0.1 mile. 🚶 = 3 minutes

## **City Center Garage:**

199 N. Dixie Hwy on Southwest corner of  
Dixie and Banyan Blvd.

Distance: 0.2 mile. 🚶 = 5 minutes

## **Governmental Center Garage:**

215 N. Olive Ave between  
Dixie Hwy. and Olive Ave.

Distance: 0.2 mile. 🚶 = 5 minutes

## **Evernia Garage:**

333 Evernia St. between  
Olive Ave. and Dixie Hwy.

Distance: 0.3 mile. 🚶 = 6 minutes

## **Ride Services:**

Ride Circuit on-demand ride service.

**RIDES FROM 7AM TO 9PM**

[ridecircuit.com/palmbeach](http://ridecircuit.com/palmbeach)

PBD does not own nor operate any of the parking lots, garages, or valets. Rates vary by location and are subject to change. All parking is privately or city operated and monitored, and rates may change without notice. Parking anywhere downtown without payment may result in vehicles being booted or towed at the owner's expense.

**Visit our website for real-time driving and walking directions to the theatre.**  
[PalmBeachDramaworks.org/box-office/directions-parking](http://PalmBeachDramaworks.org/box-office/directions-parking)



# It's Only Life

**A New Musical Revue**

music & lyrics by

**JOHN BUCCHINO**

---

**JUNE 27 AT 7PM | JUNE 28 AT 7PM | JUNE 29 AT 2PM**

Tickets on sale now! For more details visit:  
[palmbeachdramaworks.org/education/academy](http://palmbeachdramaworks.org/education/academy)

---

the**Academy**@pbd





**SEE, TOUCH, SMELL**  
**FEEL THE DIFFERENCE**



**30% OFF FIRST TIME ORDER**

**25% OFF AFTER THAT FOR PBD SEASON SUBSCRIBERS**

**561.225.1952 | [gogreendrycleaners.com](http://gogreendrycleaners.com)**

**Downtown West Palm Beach**  
**591 Evernia Street Unit 271, West Palm Beach, FL 33401**

PROUDLY SUPPORTING  
PALM BEACH DRAMAWORKS SINCE 2008



*Should be as good  
as the show*

**PISTACHE**  
FRENCH BISTRO

PISTACHEWPB.COM

## PALM BEACH DRAMAWORKS 2024/25 OFFICERS



Carlton Moody  
*Chair*



Beth Alcalde  
*Vice Chair*



Hon. Ann Brown  
*Vice Chair*



Stephen M. Rabb  
*Vice Chair*



Lew Kramer  
*Treasurer*



Penny Bank  
*Secretary*

## 2024/25 BOARD OF DIRECTORS



Sue Ellen Beryl  
*Founding Member*



Tina Bolton



Benjamin G. Boynton



Bruce Cohen



Hermine Drezner



Susan Ellerin



Edith Hall Friedheim



Jim Fuld



Susan Goldfein



William Hayes  
*Founding Member*



Lisa Koza



Cynthia Nalley



Bernard Perry



Lawrence  
Rothenberg



Susan Schwartz



Gretchen  
Shugart



Louise G. Synder

# leila

R E S T A U R A N T

## Cosmopolitan Middle Eastern Grille

featuring delicious regional dishes  
in a casual, contemporary atmosphere.

**PRIVATE PARTIES  
AND  
CATERING  
AVAILABLE**

Full Bar

### Dramaworks Special New Menu

3 Course Dinner **\$34<sup>99</sup>**

Includes  
Dessert and Coffee

120 S. Dixie Highway  
West Palm Beach, FL 33401  
561-659-7373  
**leilawpb.com**

Lunch Mon-Fri 11:00-2:30  
Dinner Mon-Sat 5-9  
Closed Sunday



**Zagat Rated**



# Thanks to Our Donors

*Donations received May 6, 2024 – May 6, 2025*

## **\$100,000 and Above**

The Cornelia T. Bailey Foundation  
Nancy and Gene Beard  
William Randolph Hearst Foundation  
Diane and Mark Perlberg  
Susan Schwartz  
Toni and Martin Sosnoff  
State of Florida Division of Cultural Affairs  
The Cultural Council of Palm Beach County

## **\$50,000 - \$99,999**

Louise Austin  
Penny Bank  
Tina and Jeff Bolton  
Honorable Ann Brown  
Stephen Brown and Jamie Stern  
Anonymous  
Sally Nathanson  
Marsha and Stephen Rabb  
The Shubert Foundation  
WPB Downtown Development Authority

## **\$25,000 - \$49,999**

Paul Bernabeo and David Cohen  
Susan and Joe Biernat  
Susan Ellerin and Chuck Lieppe  
Susan and Larry Goldfein  
Jackie Grimm and Bob Spiegel  
Maurer Family Foundation

Sandra and Bernie Meyer  
Laura Niklaus  
Elaine and Larry Rothenberg  
Marlene and Martin Silver  
Louise and Barry Snyder

# THANKS! FROM AMERICA'S BEST WINDOW CLEANING COMPANY



We are so lucky to be a part of such a wonderful, vibrant community for the past 20 years. Thanks for letting us help keep your homes clean & maintained!

*Jon & Sunny Thayer - Local Owners*



**WINDOW GANG®**

- ☑ PRESSURE WASHING
- ☑ GUTTER CLEANING
- ☑ DRYER VENT CLEANING
- ☑ WINDOW CLEANING
- ☑ HOUSE WASHING
- ☑ MAINTENANCE AGREEMENTS

**561.965.1802**

EASY ONLINE ESTIMATES AT **WINDOWGANG.COM**

2024-2025 Compass LGBTQ+ Community Center

## Events & Programs

Our mission is to engage, empower and enrich the lives of lesbian, gay, bisexual, transgender and queer (LGBTQ+) people and those impacted by HIV and AIDS.

### Opportunities Available For

- Internships
- Sponsorships
- Volunteering & Service Work
- Business Alliance Membership
- Diversity and Inclusion Training



### SAVE THE DATES!

November 22-23 • **'The Joy Ride'** Presented by CAN Community Health  
 December 2 • **World AIDS Day Ceremony**  
 December 8 • **Cocktails for Compass**  
 February TBA • **The Legacy Project**  
 February 3 • **Mr. & Miss Palm Beach Pride Pageant**  
 March 29-30 • **Palm Beach Pride & Parade**  
 April 5 • **Transgender Day of Visibility**  
 June TBA • **The Stonewall Ball**  
 July 25 • **Summertime Madness**

### Center Programs

- HIV Testing & Education
- Health Services
- Social & Support Groups
- Mental Health Services
- Business Alliance
- Youth & Family Services

### For More information

(561) 533-9699  
 201 North Dixie Highway  
 Lake Worth Beach, FL 33460  
[www.CompassGLCC.com](http://www.CompassGLCC.com)

# THANKS TO OUR DONORS

*Donations received May 6, 2024 – May 6, 2025*



## **\$15,000 - \$24,999**

Ruth Baum	Judy and Lew Kramer
Ellen and Bruce Cohen	Priscilla Leslie
Hermine Drezner	Lawrence Sanders Foundation
Eric Friedheim Foundation	Madeline and Arnold Schuster
Nancy Goodes	Mimi and Frank Walsh
Virginia and Harvey Kimmel Family Fund	Oblio and Barry Wish

## **\$10,000 - \$14,999**

James Banker	Mary Keymer
Diane and Andy Berk	Peggy Koenig
Bill Bone	Monica and Scott Laurans
Joanna and Ben Boynton	Patricia Lebow
Bill Branning, BSA Corporation	The Palm Beach Post
Samuel J. & Connie M. Frankino Foundation	Bernard Perry
James Fuld	Barbara Prine
Guggenheim Securities, LLC	Arlene and Aarne Reid
Walter Haydock	Leo Rosner Foundation
Priscilla Heublein	Maxhome, LLC
Brenda and Ed Holt	Gretchen Shugart and Jon Maurer
Robin and Reuben Jeffery	Donna and Charles Ward

## **\$5,000 - \$9,999**

Judy Berkowitz	Gayle Brody Jacobs
Barbara Blanck	Stephen Jacobs
Margaret and Robert Blume	Linda and Charles Lorimer
Daft Family Foundation	Michael McCafferty and Joseph Horton
Diane and John Dalsimer	Pamela and Brian Mclver
Andrew Eiseman	Preferred Printing and Graphics
Esta and Bob Epstein	Mary Jane Range
Elaine and Tom Ermolovich	Norman Resnick
Sara and Charles Fabrikant	Ruben Rodriguez, JP Morgan
Joan Gelch	Martie and Bob Sachs
Joan and David Genser	Hilary Shane
Roberta Golub	Joan Steinberg
Roe Green	Janet Yaseen Foundation



**PREFERRED PRINTING & GRAPHICS**

*Fine Quality Printing Since 1983*

*Cheers*

*to a quarter-century of dedication  
to the arts and our community!*

*We are delighted to be a proud partner  
and your printer of choice!*

**Making your  
business look good  
is our first priority.**



2605 Old Okeechobee Road, West Palm Beach, FL 33409

**(561) 478-2602**

**[www.preferredprinting.net](http://www.preferredprinting.net)**

# THANKS TO OUR DONORS

Donations received May 6, 2024 – May 6, 2025



## \$1,000 - \$4,999

Beth Alcalde, Akerman LLP  
Alberto Arias and Wood Kinnard  
Judy and Sam Barker  
Sherry and Tom Barrat  
Diana Barrett and Bob Vila  
Jameson Baxter  
Josephine Linder Dupont Bayard  
Karen and Alfred Bearman  
Janet Bent  
Barbara Berger  
Cathie Black and Tom Harvey  
Chastain Charitable Foundation  
Bitasta (Vitti) Chaturvedi & Family  
Dina Contri  
Christie McCrory Cook  
Ellen and Charlie Cooper  
Joanne Cordeiro  
Ruth Cyrus  
Ella and Thomas D'Agostino  
Jackie D'Onofrio  
Susan and John Damon  
William Deskin  
Anonymous  
Jessica Eagan  
Dana Egert  
Matthew Farley  
William P. Feldkamp  
Susan and William Fink  
Marilee and Dennis Fitzgerald  
Esther Flaster  
Taylor Fort  
Renate Franco  
Richard and Connie Galley  
Sandra and George Garfunkel  
Mary Cirillo-Goldberg and Jay Goldberg  
Sandra and Paul Goldner  
Monique and Dan Goldwasser  
Rachel Grody  
Alice Gross  
William Harris  
Betty and Rodger Hess  
Rand Hoch  
Alison Holtzchue  
Jean Hutchison  
Sherry and Michael Hyman  
Mike Kahoe  
Paula Kaminsky Davis and Carol Bastien  
Jeanne Kanders  
Daniel Kaufman and Timothy Beaver  
Allan and Margaret Keene  
Debra Kelly-Ennis and Joe Nestic  
Susan and Charles Kiernan  
Lisa Koza, Northern Trust  
David Kwiat  
Sidney Lesowitz and Peter Rogers  
Sheila Leventhal  
Wendi Levine and Hall Sisson

Marilyn and Richard Litner  
Ibby Lucas  
Virginia Lynn  
Macy's Inc.  
Barbara and Eric Malkin  
Susan and Louis Mark  
Kimberly Martin  
Deborah and Ernest Mhoon  
Joan and Carlton Moody  
Ryan Moran  
Keelyn Mulvey  
Anonymous  
Beverly Myers  
Cynthia Nalley  
Stephen Nesbitt and Christopher Caneles  
Peter Norden  
Jason Nuttle  
Luann and Bill Parmelee  
Stephanie and John Pew  
Mary Ellen and Michael Peyton  
Ronnie and William Potter  
Denise and Gil Rivas  
Elizabeth and Gerald Rorer  
Carrie and Stan Rosenbaum  
Lisa and Jeff Rosenkranz  
Linda and Harold Rosenson  
Dana and Mitchell Rubin  
Dan Sampson, Milestone Mortgage Corp.  
Jennifer and Scott Shiner  
Lawrence Schorr  
Hazel and Michael Schultz  
Sanford Schuman  
Caroline and Bill Shepherd  
Theatre Guild at Mirasol  
Dan Sherbo and Tom Nixon  
Phyllis Siegel  
Culver Smith and Donna Marks  
Eugene Spector  
Karin and John Strasswimmer  
Bonnie Strauss  
Elissa Terry  
Vincent Tese  
Sandra Thompson  
Diane Trentacoste  
Curtis Weaver  
Pam and Mark Weinstein  
Janice and Arnold Weisler  
Frances and Robert Weisman  
Lois and Barry Weiss  
Ron Wetzel and Nathan Hensch  
Lee Wolf and Jordan Cohen  
Robin Woodard  
Diane and John Wren  
Peter Wronsky  
Kimberly and Roger Yaseen  
Marcy and Jack Zeltzer  
Susan Zuckert and Stephen Rogers

# Take me to... LYNORA'S

- S I N C E 1 9 7 6 -

## 10% Off

\*ONLY VALID DURING PALM BEACH DRAMA WORKS  
SHOW SCHEDULE. NOT VALID DURING HAPPY HOUR

LYNORAS.COM



*corcoran*

Make sure you're  
represented by the *best*.

Discover what your home is worth in today's  
leading market while inventory is low and homes  
are in demand.

Call Don today for a free home analysis.

Don Todorich

561.373.1791 | don.todorich@corcoran.com

## STAY CONNECTED WITH US AND RECEIVE THE LATEST PBD NEWS



@PalmBeachDramaworks



@PBDramaworks



@PalmBeachDramaworks



@PBDramaworks



@Palm-Beach-Dramaworks



PalmBeachDramaworks.org

# THANKS TO OUR DONORS

Donations received May 6, 2024 – May 6, 2025



## \$500 - \$999

Robin and Richard Abedon  
Sherry Norris and John Bauman  
Nancy Beren  
Sue Ellen Beryl and William Hayes  
Julianne and Norman Boyd  
Adrienne Broch  
Nancy and Peter Brown  
Philip Buttaravoli  
Larry and Anita Cash  
Meredyth Cole  
David Cordani  
Peter Cromarty  
Martha and Milt Dalitzky  
Skip Drezner  
Sara Fabrikant  
Beth and Rich Fentin  
Margaret Flah  
Allison and Stuart Haft  
Marcia Halpern  
Tom Hantzarides and Anastasios Samaras  
Ellen Hart  
Chiu-Yin Wong and Gardiner Hempel, Jr.  
Carla and David Herwitz  
Rochelle and David Hirsch  
David Hirschel  
Alesia and John Hoy  
Judy and Martin Isserlis  
Lorna and Keith James  
Greg Jania  
Patricia and William Jordan  
Jaclyn and Gerald Kaminsky  
Carole Kisseel  
Nancy and Paul Knapp  
Phyllis and Larry Kushins  
Judith and Paul Lakind

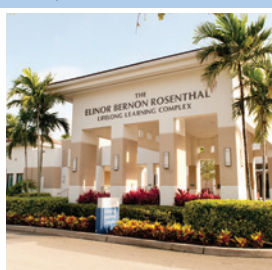
John Laughton  
Gerard Lemongello  
Elisa Leonard  
Ellen and Andrew Lynette  
Edvin Malagic  
Marjorie Marks  
Millie and David McCoy  
Thomas Meier  
Ashley and Richard Crosier  
Jeri and Charles Muoio  
Caitlin and Steve Obringer  
Laura and William Orlove  
Joanne Polozker  
Lynn and Peter Read  
Peter Rezzonico  
Susan Rieser  
Joseph O. Rubinelli, Jr.  
Joan C. Sall  
Elizabeth and John Santoro  
Joyce Schwartz  
Robin and Joel Shaivitz  
Francine and Art Siegel  
Linda and Don Silpe  
Lois Steinberg  
Chris and Tom Streit  
Connie Tamburo  
Terrie Temkin  
Carolina and Joe Thomas  
D'Vera Topol  
J. David Veselsky and Kenneth Elias  
Ellen Wedner and Mik Cribben  
Joel Yura  
Jaimie Ziprick  
Jan Rock Zubrow

## \$100 - \$499

Anonymous  
Linda Agnolucci  
Ruth and Stuart Agranoff  
Deanna and Bernard Albert  
Joan and Jay Albert  
Gloria Altman and Carlton Howard  
Diane and Peter Arnet  
Esther Axelrod  
Beth Baker  
Joan Balfour  
Charles Balkcom  
Morene Bangel  
Helene Barnett and Howard Rubin  
Catherine and Steven Barre  
Susan Bauchner  
Nadine Bederson  
Nancy and Mark Bender  
Ellen and Ernest Berman  
Ellen Bernstein  
Robert Bertisch  
Susan Biederman  
Bob and Cherrie Bierley

Nona Redding Bilionis  
Lori Black  
Margaret and Matthew Blake  
Jane Bloom  
Karen and Alfred Blum  
Bill Blumberg  
Arthur Blumer  
Jesse Bondar  
Jacqueline and Jean Claude Boutrouille  
Susan and Paul Brenner  
Gail and Marc Bressler  
Roslyn and Alan Brilliant  
Audrey Brody  
Helene and Ken Brower  
Patricia Burdett  
Susan Cardinale  
Sue Casher  
Lisa Chalkley  
Eileen and David Chernoff  
Donald Cohn  
Natasha Consigli  
Karol and Paul Costa

Dennis Creaghan and Deborah Esposito  
Fern Denarvaez  
Janet and David Desmon  
Susan Diamond  
Rob Donohoe and Michael Coleman  
Louise Dougher  
Sally Drob  
Renee Nadel and Harry Dubow  
Linda and Philip Dunmire  
Shelly and Neal Ehrenberg  
Harriet Ellis  
Darlene Ellis  
Susan and Royce Emley  
Marilyn Ernsteen  
Diane and Neil Exter  
Ron Ezring  
John Fariello  
Linda and Scott Fayne  
Cecily and Wallace Feldman  
Donna and Steven Feldman  
Lynne and Perry Feyk  
Nona Fine



FLORIDA ATLANTIC

## LEARNING ENRICHES YOUR LIFE

Participating in Osher Lifelong Learning Institute (OLLI) not only enriches your knowledge but also nurtures your personal growth and connections within a vibrant community of learners. Whether you're looking to explore new interests, enjoy stress-free education, or simply engage with others who share your curiosity, OLLI offers a fulfilling experience that enhances various aspects of life.

We are offering first-time patrons a one-time class at the member discount price with this promo code: **PBDW25**



**LEARN MORE ABOUT OUR PROGRAMS:**

Visit our website at [olli.fau.edu](http://olli.fau.edu) or scan the QR code at left.

5353 Parkside Drive, PA-134, Jupiter, FL 33458 | (561) 799-8667

FOLLOW US AT: [Facebook](https://www.facebook.com/OLLIFAUJUPITER) OLLIFAUJUPITER

# ENJOY \$5 OFF ANY CRUISE

PROMO CODE

**5DRAMA**



**NEW! POLYNESIAN DINNER CRUISE**



Departing from Downtown West Palm Beach



(561)881-9757 [www.visitpalmbeach.com](http://www.visitpalmbeach.com) 138 S. Flagler Dr.

# THANKS TO OUR DONORS

Donations received May 6, 2024 – May 6, 2025



## \$100 - \$499 *continued*

Claire Barenholtz and Alan Fishman  
Melanie and Mort Fishman  
Leona and Marvin Fleischman  
Lynn Foggie  
Regina Foon and Albert Seidner  
Karen Sue Fox  
Helen Franke  
Leah and Ed Frankel Foundation  
Miriam Freedman  
Fran and Mark Freeman  
Ann and Ira Friedman  
Diana and Elliot Garfinkel  
Debby Gershon  
Rana Gerson  
Carol Getson  
Doris Gilman  
Suzanne Gold  
Sue Goldfinger and Timothy Bell  
Rona Goldstein  
Joan Goldstein  
Sharon and Bruce Goodman  
Dianne and Martin Gorbaty  
Sandra and George Gottlieb  
Frances Gragg  
Francine and Arthur Greenberg  
Ruth Greenberg  
Gail and Ed Greenberg  
Zee Jay and Jerry Greenspan  
Peter Grossman and Lawrence Timmins  
Joseph Guidetti  
Sharon Harris  
Auta and Robert Hendler  
Diana Jill Henry  
Rona and Roger Heymann  
Anne and Robert Hite  
Rona and Sam Hollander  
Wendy Honig  
Phyllis Hopman  
Nancy and Barry Horowitz  
Leigh Brown Jacobs  
Mary Jacobson  
Lillian Judelson  
Ellen and Jerry Kahan  
Susan Gold Kahn  
Dr. Florence Kaslow  
Linda and Stephen Kates  
Paula Katz and Bob Davison  
Sheryl and Leonard Kessler  
Susan Kirkman  
Gail and Michael Kirsch  
Liz and Jeff Klein  
Lois and Larry Kleinberg  
Edward Klotz and Linda Allen  
Shirley Koo  
Linda and Gene Kopf  
Edward Korenman  
Linda Kramer  
Ethel and Marvin Krotenberg  
Rosalie and Steve Kurland  
Rita and Herbert Ladenheim  
Ronnie Larsen  
Wynne Leon  
Peggy and David Levin

Stanley Levin  
Stephanie and Sam Levine  
Shelley Levine  
Dr. Jerold and Renee Kramer  
Barbara and Myron Levy  
Miriam Lief and Albert Goldberg  
Rachel and Per Lorentzen  
Gina Lorenzo  
Arlene and David Lurie  
Barbara Lurie  
Anonymous  
Pauline and Arnold Maerov  
Stephen and Emily Magowan  
Mary Ann Martin  
Joan and Lou Martins  
Lamar Matthews  
Jim and Gail McKay  
Katrina McLin  
Patric McPoland  
Etta and Froman Mehl  
Daisy and John Meroy  
Madeline and Arthur Millman  
Joan Milowe  
Lynne Minsky  
Daniel and Harriet Mironov  
Harriet Molk  
Eileen and Anthony Montalbano  
Susan Morris  
Beverly and Marvin Morse  
Doris Noble  
Kelly Noel and Robert Roath  
Alison and Thomas O'Brien  
Rosanne Patchen  
Abby and Steve Perelman  
Dennis Perry  
James Sabin and Yolanda Phinney  
Charlotte and Norman Plotsky  
Robin and Joseph Pollack  
Marsha and Jerry Pollack  
Michael Pomerantz  
Jill Preston  
Alexis Sophia Read  
Susan and Erick Reickert  
Susan Reinglass  
Joyce Reisman  
M. Paul Rice  
Alison and David Rice  
Marilyn Rice  
Emma Rich  
Beverly Ringel  
Joel Risch and Richard Smith  
Patti and John Riter  
Marilyn Ritter  
Arleen and Allan Roberts  
Gloria Roberts  
Stephen Roos and Terri Sobrane  
Paige M. Rose  
Patricia and David Rosenberg  
Susan and Jerome Rosenzweig  
Barbara and Chip Ross  
Judith and Harvey Rothenberg  
Carolyn Rowe  
Steven Rudnitsky

David Ruzow  
Laura and Bill Sabayrac  
Frumet and David Sachs  
Billie and Steven Sandler  
Henrietta and Bergino Santo  
Mary Jane Saunders  
Joy and Gordon Schafer  
Muriel Pattis and Donald Schaumberger  
Seawinds Singer Island  
Peter Schneider and Dena Seigel  
Faith Schullstrom  
Amy and Richard Schwed  
Midge Seltzer  
Christine and Mark Shalloway  
Linda Sherby  
Tina Parsons and Randy Sherman  
Paul Siegel  
Sybil and Marshall Sigel  
Josette Silver  
Nellie Lou Slagle  
Tema Smeayne and Edward Gerstein  
Carol Smith  
Toni Smith and Jerrold Feigenbaum  
Joyce and Robert Smith  
Mark Sneckenburg  
Libby Snyder and Jill Merell  
Felice and Marty Solomon  
Linda Sorenson  
Nancy Spiegel  
Howard and Rebecca Spitzer  
Larry and Alice Spritzer  
June and Jerome Spunberg  
Molly and Nick St. Cavish  
Jerry Stemerman  
Barbara and Fred Stern  
Eileen Stolz  
Caryl and Richard Stone  
Goldie and Alan Stopek  
Marlene and Harold Strauss  
Judith Suslow  
Olivia A. Tartakow  
Susan Taylor  
Tristen Mary Taylor  
Joan and Irwin Tepper  
Wade Thunhorst  
James Toomey  
Elaine C. Tucker  
Nancy Vittorini  
Craig Vogel  
Caroline von Feilitzsch  
Pat Wecht and Barbara Brandwein  
Arlin Weingold and Natalie Pincus  
Barbara and Stephen Weiss  
Diane and Stephen Weiss  
Adrianne and Fred Weissman  
Carol Weltz  
Shelby and Charles Werner  
Rosie Whitcraft and Vickie Walling  
Jane Wilcox  
Nancy and David Wolf  
Joanna Wright  
Baxter Wynn  
Bob Zwicky



# PERLBERG FESTIVAL OF NEW PLAYS

This annual event features readings of five developing plays. Each reading is followed by a post-performance discussion in which patrons offer feedback.



## JANUARY 9-11, 2026

Executive Producers: **DIANE & MARK PERLBERG** • Associate Producers: **SANDRA & BERNIE MEYER**  
Sponsored in part by: **MAURER FAMILY FOUNDATION** • PBD is an associate member theatre of the National New Play Network (NNPN).





## 2024/25 RESTAURANT CLUB

The PBD Restaurant Club provides our patrons with special offers and discounts throughout the season at these restaurants that support our theatre.

### ELISABETTA'S

RISTORANTE • BAR • PIZZERIA

Complimentary scoop of gelato with the purchase of an entrée  
185 Banyan Blvd | (561) 342-6699

### GREASE

BURGERS • BEER • WHISKEY BAR

Complimentary order of fries with the purchase of a burger  
213 Clematis St | (561) 651-1075

### leila

R E S T A U R A N T

3-Course Prix Fixe Dinner (\$34.99)  
120 S Dixie Hwy | (561) 659-7373

### LYNORA'S

S I N C E 1 9 7 6 •

10% off (excludes tax, gratuity, and happy hour items)  
207 Clematis St | (561) 899-3117

### PISTACHE

FRENCH BISTRO

3-Course Prix Fixe Dinner (\$55-offer valid show days only after 5:30pm)  
101 N Clematis St | (561) 833-5090

### Rocco's Tacos

AND TEQUILA BAR

Complimentary order of guacamole w/ purchase of (2) entrees  
224 Clematis St | (561) 650-1001

[palmbeachdramaworks.org](http://palmbeachdramaworks.org)

# Take a Deep Breath

A great big thanks to all of you who contributed to our Take a Deep Breath Campaign, helping us to achieve our stringent safety protocols and breathe easy in our beautiful theatre.

**\$100,000**

Honorable Ann Brown  
Louise and Barry Snyder  
Toni and Martin Sosnoff

**\$50,000**

Nancy and Gene Beard

**\$25,000**

Sue Ellen Beryl and William Hayes

**\$15,000**

Penny Bank  
Ruth and Ted Baum

Stephen Brown and Jamie Stern  
Phyllis and Herbert J. Siegel

**\$10,000**

Tina and Jeff Bolton  
Leah and Ed Frankel Foundation  
Nancy Goodes

Joan G. Smith and William Karatz  
Sally Nathanson

Aarne and Arlene Reid  
Mimi and Frank Walsh

**\$5,000**

The Chastain Foundation

Christina Dennis

Susan and Larry Goldfein

**\$1,000 - \$2,500**

Edwige and John Bade  
Roy Bartolomei and Peter Wronsky  
Lucy W. Cook  
Anonymous  
Cathy and Tom Farmer  
Arlene F. and Donald Fleischman  
Renate Franco

Pam and Bob Goergen  
Alice Gross  
Byron Gross and Ricky Tovim  
Ann and Bob Hagelstein  
Anonymous  
Priscilla Heublein

Patricia and William Jordan  
Terry Liddell  
Zelda Mason  
Arlene and Richard Siudek  
Nicki van Vonne  
Diana and John Weir  
Lois and Barry Weiss

**\$500 - \$999**

Linda L. and Keith Beaty  
Karen and Alfred Blum  
Joan and Lyle Brundage  
Paula Kaminsky Davis  
Dinah Fulton  
Rochelle and David A. Hirsch  
Michael Hoagland and Joseph Kolb

Sherry and Stephen Jacobs  
Marjorie and Sheldon Konigsberg  
Judy and Lew Kramer  
Laura Brooks  
Randi and Norman Pecan  
Stephanie and John Pew  
Joanne Polozker  
Barbara N. Prine

Ann Marie and Peter Rezzonico  
Naomi Rosenberg  
Carol and Joseph Rosetti  
Francine and Art Siegel  
Lois Steinberg  
Zee Jay and Jerry Greenspan  
Marcy and Jack Zeltzer

## OUR MISSION

*Palm Beach Dramaworks believes in the transformative power of live theatre and is committed to producing classic, contemporary, and world premiere plays that entertain, enlighten, stimulate discussion, and illuminate our shared humanity. We are equally dedicated to creating new works and cultivating new audiences, upholding the original objectives of the regional theatre movement. We recognize and value the power of education, offering inspiring, life-changing programs for students, and thought-provoking initiatives for adults.*

## OUR VALUES

*We steadfastly strive to maintain a welcoming, inclusive, and supportive environment for our staff, for our artists, and for our patrons.*

## OUR VISION

*To enrich the lives of those in our community, and to be recognized nationally as a vigorous and vital company that produces meaningful theatre and transforms lives.*

## HONORARY DIRECTORS

Ruth Baum  
Nancy Beard  
Stephen Brown  
Ravi Chaturvedi  
Esther Dinerstein  
Esther Flaster  
Larry Goldfein  
Roe Green

Bob Hagelstein  
Sidney Lesowitz  
J. Barry Lewis  
Sherron Long  
Pamela McIver  
Charles Muoio  
Sally Nathanson  
Robert Nederlander

Shari Santell  
William N. Shepherd  
Marlene Silver  
Mimi Walsh  
Beth Walton  
Lee Wolf



Sponsored in part by the State of Florida, Department of State, Division of Cultural Affairs, the Florida Council on Arts and Culture, the Board of County Commissioners, the Tourist Development Council, and the Cultural Council for Palm Beach County.

## Palm Beach Dramaworks

*is a proud member of...*



ROLLING WORLD PREMIERE  
National New Play Network



# Personalized healthcare you deserve.

Call **561.655.8990** for a  
complimentary meeting  
to learn more

**Donald R. Watren, MD**

*MDVIP-Affiliated Physician*

---

Located next to Good Samaritan Hospital  
[DonaldWatrenMD.com](http://DonaldWatrenMD.com)



# CENTER OF Paradise



## MORE TO EXPLORE

A home to many, and destination for all, welcome to the Center of Paradise! Explore, savor, shop and create memories that last a lifetime.

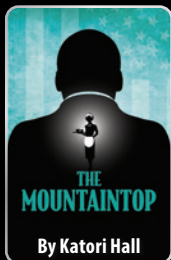


Discover more about DowntownWPB!  
Visit [DowntownWPB.com](http://DowntownWPB.com)  
or call 561.833.8873.

@DOWNTOWNWPB



Brought to you by the West Palm Beach Downtown Development Authority



## THE MOUNTAINTOP

October 24 - November 9, 2025

It's April 3, 1968. Dr. Martin Luther King Jr., having just delivered one of his most memorable speeches, returns to the Lorraine Motel and encounters Camae, a beautiful, mysterious maid. She shares some upsetting news that compels him to confront his life and legacy – “warts and all,” as Hall has said. This spellbinding, inspired fantasia on the great civil rights leader's last night on earth won the 2010 Olivier Award for Best New Play.



## THE SEAFARER

December 12 - 28, 2025

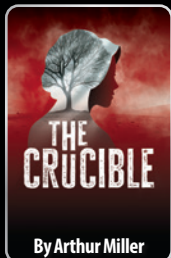
It's a devil of a homecoming when Sharky Harkin returns to Dublin on Christmas Eve to look after his belligerent, alcoholic brother, Richard, who's recently gone blind. Two of their old boozy friends join them for an evening of drinking and poker, and one of them brings along a newcomer, the portentous Mr. Lockhart, who compels Sharky to confront his past. This suspenseful, dark, and humorous fable is a powerful and ultimately moving tale about second chances and redemption.



## DRIVING MISS DAISY

February 6 - 22, 2026

This beloved, heartfelt, Pulitzer Prize-winning play is the story of an unlikely, life-changing friendship between Daisy Werthan, a 72-year-old Jewish widow, and Hoke Coleburn, a Black chauffeur hired by her son Boolie. Set in Georgia, the play unfolds over a 25-year period, beginning in 1948. Daisy is initially hostile to Hoke, but despite seemingly insurmountable differences, their relationship blossoms into one of mutual respect and affection.



## THE CRUCIBLE

April 3 - 19, 2026

A masterful, riveting exploration of the 1692 Salem witch trials, this timeless and timely Tony Award-winning play is also an allegory for McCarthyism and the House Un-American Activities Committee's modern-day witch hunts. Convinced that witches are living among them, Salem is gripped by mass hysteria, paranoia, fear, and retribution, with neighbors turning on and turning in neighbors, and religious fervor turning a blind eye to justice. Miller considered *The Crucible* his finest play.



## WORLD PREMIERE

## VINELAND PLACE

May 15 - 31, 2026

For young writer Henry Sanders, it seemed like the perfect job: finishing the long-awaited final book of the novelist who was his hero. Hired by the novelist's widow, Henry finds himself instead in the midst of a rapidly developing mystery. *Vineland Place* is an intimate thriller, filled with dangerous surprises to the final page.