

PALM BEACH
pbd
DRAMAWORKS

Celebrating

25
YEARS

OF THEATRE TO THINK ABOUT

Welcome to our 2024/25 Season

It's hard to believe that the 2024-25 season marks our twenty-fifth anniversary, which means we've been providing Palm Beach County with stimulating and sometimes edgy material – Theatre to Think About – for a quarter of a century. It seems like only yesterday that we conceived of starting a theatre company to produce classic, contemporary, and overlooked plays that were provocative, thought-provoking, and moving. We believed there were local audiences hungry for challenging work, plays that illuminate the human condition and resonate in deeply personal ways. We were naïve enough to think, "If you build it, they will come." It turned out that we were correct.



Since PBD opened its doors in 2000 through the end of the 2024-25 season, we will have produced some 120 shows and several concert versions of classic musicals. We think the community truly began to understand what we were trying to achieve when we performed a pair of plays by Edward Albee in our third season, and a piece by Jean-Paul Sartre the following season.

From the beginning, there was an ambitious agenda lurking; we needed to establish the company in order to fulfill our goals. Today we have a robust education department and appealing community engagement programs. The Dramaworkshop and the Perlberg Festival of New Plays nurture and develop new work. And as our reputation has grown, our repertory has evolved. We always believed that regional theatres must encourage new work and new voices, and world premieres are now a significant part of our profile.

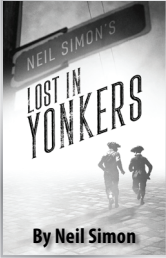
We are so grateful to all of you for joining us on this remarkable journey, and for your steadfast support of PBD.

Sue Ellen Beryl

Sue Ellen Beryl
Managing Director

William Hayes

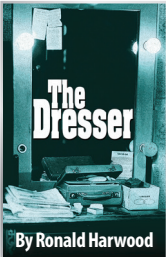
William Hayes
Producing Artistic Director



LOST IN YONKERS

November 1 - 17, 2024

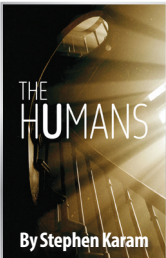
When their widowed father heads south to try and earn a living, two teenage boys, Jay and Arty, are left in the care of their autocratic Grandma Kurnitz, whose four adult children have been damaged by her cruelty. Set during World War II, this funny and touching Pulitzer Prize-winning memory play is both an exploration of the wounds inflicted by family, and a testament to the power of familial love and resiliency.



THE DRESSER

December 20, 2024 - January 5, 2025

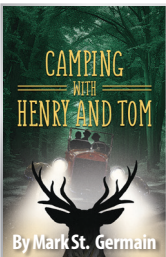
It's 1942, bombs are dropping over England, and a renowned but fading actor is bringing Shakespeare to the provinces with a ragtag troupe. Sir, scheduled to give his 227th performance of *King Lear*, is in no condition to go on, but his devoted, self-sacrificing dresser, Norman, is determined to get him onstage. Sir and Norman's co-dependent – if unequal – relationship is the heartbeat of this warts-and-all, tragicomic valentine to the transcendent magic of theatre.



THE HUMANS

February 14 - March 2, 2025

There's a sense of disquiet in the air when the loving, if dysfunctional, Blake clan gathers for Thanksgiving dinner in daughter Brigid's dingy Chinatown apartment. "A family play that is sort of infected by my love of the thriller genre," is how the playwright once described this Tony Award-winning comedy drama, in which the foibles, fears, and fragilities of an American family play out with great insight, humor, and compassion.



CAMPING WITH HENRY AND TOM

April 11 - 27, 2025

Warren G. Harding, eager to get away from the press, prying eyes, and the presidency, accepts an invitation to join Henry Ford and Thomas Edison on their annual camping trip. Stranded in the woods, they converse about politics, ambition, family, and fame, revealing three starkly different personalities and world views. A work of fiction inspired by an actual 1921 excursion, the play deals with issues and ideas that remain as relevant today as they were 100 years ago.



WORLD PREMIERE

DANGEROUS INSTRUMENTS

May 23 - June 8, 2025

Laura, a determined single mother, faces the ultimate test of love for her exceptionally bright son, Daniel. When Daniel's brilliance spirals into darkness, Laura finds herself thrust into a gripping battle against a broken system. In a race against time, she must confront a parent's deepest fears and sacrifice everything to rescue her son from the brink of becoming America's next tragic headline.



THE NEXT 25 YEARS

As we shape the next chapter in Palm Beach Dramaworks' story, we invite you to join us in securing our future. We will soon embark on a special \$2.5 million fundraising initiative to celebrate our 25th Anniversary, and have compiled a variety of ways to support our mission. We're pleased to share the first opportunity with you.

TAKE A SEAT CAMPAIGN

At PBD, each performance elicits a compelling connection between the actors onstage and the audience. Now you can take that bond a step further. The **TAKE A SEAT CAMPAIGN** offers a unique and limited chance to become an integral part – quite literally – of the theatre's very fabric.

With a gift of \$5,000, you can ***name a seat in our theatre for five years!***

Each seat comes with an engraved seat plaque bearing your name or a dedication of your choice. You also have the option to choose your seat location (subject to availability).

When you **Take a Seat**, you're not just a spectator to the magic of theatre; you're an essential part of every performance, from the opening curtain to the final standing ovation, because your gift is helping us flourish. You are playing a role in our history, and will receive Benefactor recognition in our 25th Anniversary Donor Honor Roll.

Seize this limited opportunity and take your seat today.

Contact Sue Ellen Beryl at (561) 514-4042 ext 102 or email sberyl@palmbeachdramaworks.org

Subscription Information

For all ticketing policies, visit palmbeachdramaworks.org.

Please note: The 2024-2025 season opens on November 1, a few weeks later than usual, to provide flexibility and more opportunities to become a subscriber.

Renewing Subscribers:

- ◆ Complete the enclosed form and return it to us by **June 1**.
- ◆ If you are requesting a change, your confirmation will take longer.
- ◆ Please note: if you are changing your series we cannot guarantee your same seats.
- ◆ Confirmations will be mailed as soon as your renewal is processed. Please indicate if you have a summer address.

SUBSCRIPTIONS REQUESTING A CHANGE ARE PROCESSED BY THE DATE RECEIVED AND CONTRIBUTION LEVEL. PLEASE SEE PAGE 10 FOR DETAILS ON BECOMING A PBD DONOR.

New Subscribers:

- ◆ Pick your series (day and time).
- ◆ Provide any special requests and preferences so we can best seat you.
- ◆ Complete the enclosed form and return it to the box office as soon as possible.
- ◆ New subscribers will be sent a receipt of payment and seated in July.

Ticket Options

If you would like to download a paperless version of your tickets, please check the "Email Tickets" box on your subscription form. We will email you a digital copy of your tickets prior to each performance.

If you would like to leave your tickets at the box office for pickup, please check the "Hold at Box Office" box on your subscription form.

Tickets will be available for pickup in August. We do not mail tickets.

561.514.4042 ext 2 | boxoffice@palmbeachdramaworks.org

Perlberg Festival of New Plays

Purchase access to the entire festival on your subscription card. Package includes all festival-related events and benefits. Subscribe to all five play readings for just \$100. Single tickets are \$30 each, and go on sale July 22.

Talkbacks

Each Wednesday and Thursday matinee is followed by a talkback, giving audiences the opportunity to ask questions of the cast and delve deeper into the play and production.

OutStage@pbd

Special evenings of each PBD production that engage the LGBTQ community. Evenings include a pre-show reception, the play, and a post-show reception.

Palm Beach Dramaworks Subscription Series Chart

2024/25 SEASON SUBSCRIPTION PRICES

	Opening	Standard	Preview
5 PLAYS	\$460	\$385	\$285
4 PLAYS	\$368	\$308	\$228

DAY	SERIES	PLAY 1	PLAY 2	PLAY 3	PLAY 4	PLAY 5
WED MAT 2:00PM		WEDNESDAY MATINEES INCLUDE POST-PERFORMANCE DISCUSSIONS				
	WM01	Nov. 6	Dec. 23*	Feb. 19	Apr. 16	May 28
	WM02	Nov. 13	Dec. 30*	Feb. 26	Apr. 23	June 4
WED EVE 7:30PM						
	PRV1 (PREVIEW)	Oct. 30	Dec. 18	Feb. 12	Apr. 9	May 21
	W01	Nov. 6	Dec. 23*	Feb. 19	Apr. 16	May 28
	W02	Nov. 13	Dec. 30*	Feb. 26	Apr. 23	June 4
THURS MAT 2:00PM		THURSDAY MATINEES INCLUDE POST-PERFORMANCE DISCUSSIONS				
	TM01	Nov. 7	Dec. 26	Feb. 20	Apr. 17	May 29
	TM02	Nov. 14	Jan. 2	Feb. 27	Apr. 24	June 5
THURS EVE 7:30PM						
	PRV2 (PREVIEW)	Oct. 31	Dec. 19	Feb. 13	Apr. 10	May 22
	T01	Nov. 7	Dec. 26	Feb. 20	Apr. 17	May 29
	T02	Nov. 14	Jan. 2	Feb. 27	Apr. 24	June 5

FRI EVE 7:30PM						
	F01 (OPENING)	Nov. 1	Dec. 20	Feb. 14	Apr. 11	May 23
	F02 (OutStage@pbd)	Nov. 8	Dec. 27	Feb. 21	Apr. 18	May 30
	F03	Nov. 15	Jan. 3	Feb. 28	Apr. 25	June 6
SAT MAT 2:00PM						
	SM01	Nov. 2	Dec. 21	Feb. 15	Apr. 12	May 24
	SM02	Nov. 9	Dec. 28	Feb. 22	Apr. 19	May 31
	SM03	Nov. 16	Jan. 4	Mar. 1	Apr. 26	June 7
SAT EVE 7:30PM						
	SE01	Nov. 2	Dec. 21	Feb. 15	Apr. 12	May 24
	SE02	Nov. 9	Dec. 28	Feb. 22	Apr. 19	May 31
	SE03	Nov. 16	Jan. 4	Mar 1	Apr. 26	June 7
SUN MAT 2:00PM						
	SU01	Nov. 3	Dec. 22	Feb. 16	Apr. 13	May 25
	SU02	Nov. 10	Dec. 29	Feb. 23	Apr. 20	June 1
	SU03	Nov. 17	Jan. 5	Mar. 2	Apr. 27	June 8



PREVIEW



OPENING



OutStage

All dates and titles subject to change

* This performance is on a Monday.

Patrons with Special Needs:

Accessible seating and restrooms are available.

Please be sure to mention any special needs when placing your ticket order. Hearing assistance devices are available in the lobby.

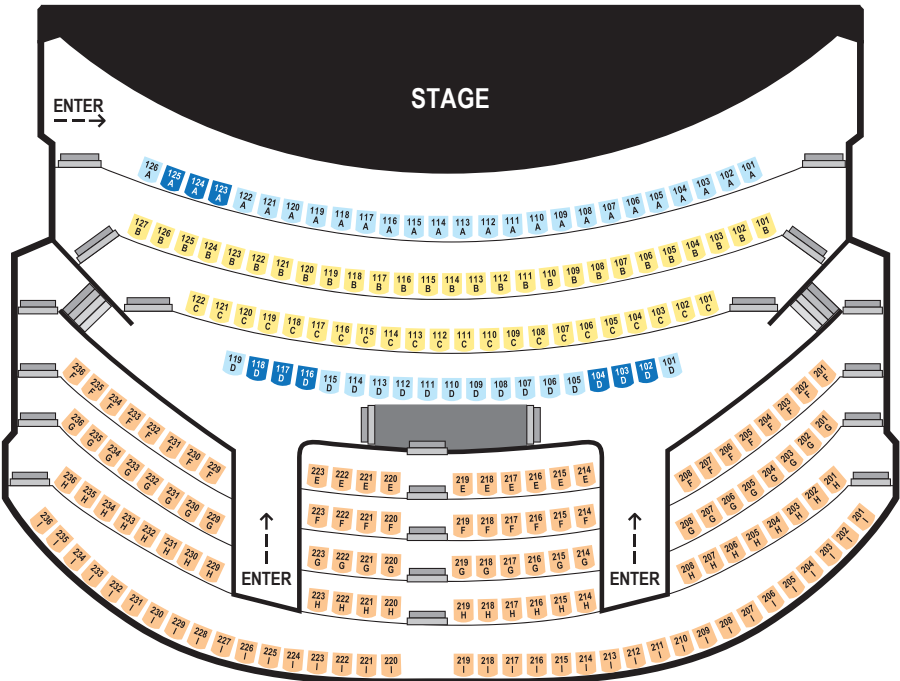


Seating:

- ENTRANCE LEVEL – NO STAIRS
-
- WHEELCHAIR SEATING

LOWER LEVEL

The spacious **Don & Ann Brown Theatre** offers an intimate perspective with a total of 218 plush seats.



The Box Office cannot guarantee seating requests.



Perlberg Festival of New Plays

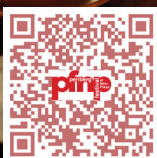
January 15-19, 2025

This popular annual event features professional readings of five developing plays.

Subscriptions to all five play readings are available now for just \$100.

Single tickets go on sale July 22.

Tickets to individual play readings are \$30.



palmbeachdramaworks.org

Support the Annual Fund!

At Palm Beach Dramaworks, we believe in the transformative power of live theatre. And your support is vital to our success. With ticket sales covering less than half of our annual budget, the generosity of our patrons enables us to push boundaries with new works, engage young minds through our education initiatives, and create unforgettable theatre experiences for our audience.

DISCOVER YOUR ANNUAL FUND MEMBERSHIP LEVEL

Supporting our general operating fund is what keeps our mission thriving.



Please consider including a donation on your subscription form at one of these levels:

\$100 | \$250 | \$500 | \$1,000 | \$2,500 | \$5,000



With a five-year annual fund pledge commitment you join a special community dedicated to sustaining our mission into the future.

\$5,000

(\$1,000 per year):

Recognition in our playbill and on our website for five years.

\$10,000

(\$2,000 per year):

Additional acknowledgment on our lobby donor wall.

★ BECOME A PRODUCER ★

Be an integral part of producing one of our 2024/25 productions. Individual and Corporate Sponsorship opportunities are available for:

\$10,000 Associate Producer | **\$15,000** Producer

\$25,000 Executive Producer (*exclusive opportunity*)

To discover all the benefits of our Annual Giving Programs, contact Sue Ellen Beryl at (561) 514-4042 ext 102.



PARKING WITHOUT THE DRAMA

CONVENIENT PARKING OPTIONS

Rates vary by location

Banyan Garage:

200 Banyan Blvd. between Olive Ave. and Narcissus Ave.

🚶 = 3 minutes

Datura Garage:

205 Datura St. between Narcissus Ave. and Olive Ave.

🚶 = 3 minutes

City Center Garage:

199 N. Dixie Hwy. on Southwest corner of Dixie and Banyan Blvd.

🚶 = 5 minutes

Governmental Centre Garage:

215 N. Olive Ave. between Dixie Hwy. and Olive Ave.

🚶 = 5 minutes

Governmental Center

4th Street Parking Lot:

315 3rd St. between Dixie Hwy. and Olive Ave.

🚶 = 6 minutes

Evernia Garage:

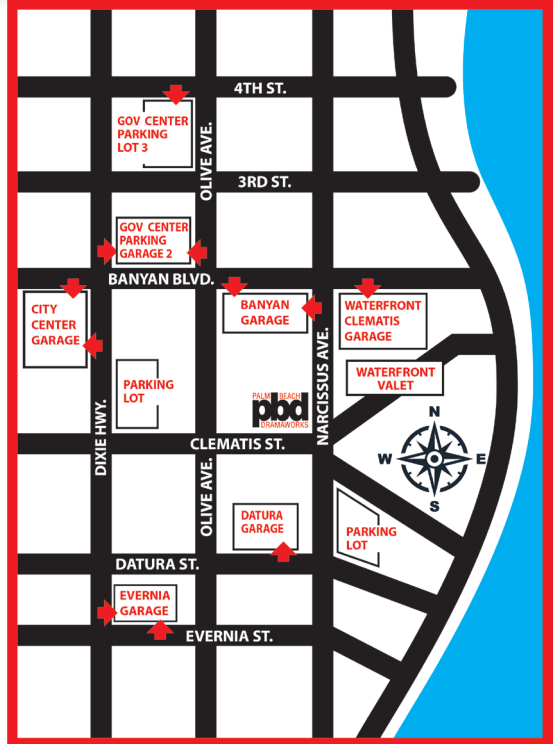
333 Evernia St. between Olive Ave. and Dixie Hwy.

🚶 = 6 minutes

Waterfront Clematis Garage:

101 Clematis St. with entrance on Southeast corner of Banyan Blvd. and Narcissus Ave.

🚶 = 3 minutes



PARKING LOCATIONS AND PRICING:

wpb.org/government/parking-administration/parking-locations

FREE RIDE CIRCUIT:

ridecircuit.com/palmbeach

Palm Beach Dramaworks does not own or run any of the parking lots, garages, or valets in the area. All parking is privately or city operated and monitored. Rates posted may change without notice. Parking anywhere downtown without payment will result in cars being booted or towed at the owner's expense.

Palm Beach Dramaworks
201 Clematis Street
West Palm Beach, FL 33401

561.514.4042 • palmbeachdramaworks.org

Nonprofit Org.
U.S. POSTAGE
PAID
WEST PALM BCH, FL
Permit No. 391



2024/25 Palm Beach Dramaworks SEASON SUBSCRIPTIONS

